



## Appendix B(vii)

### **Georgia**

Fulton County (121)

Gwinnett County (135)

# Georgia: Fulton and Gwinnett County

— Census Tracts 2020  
— Counties 2020

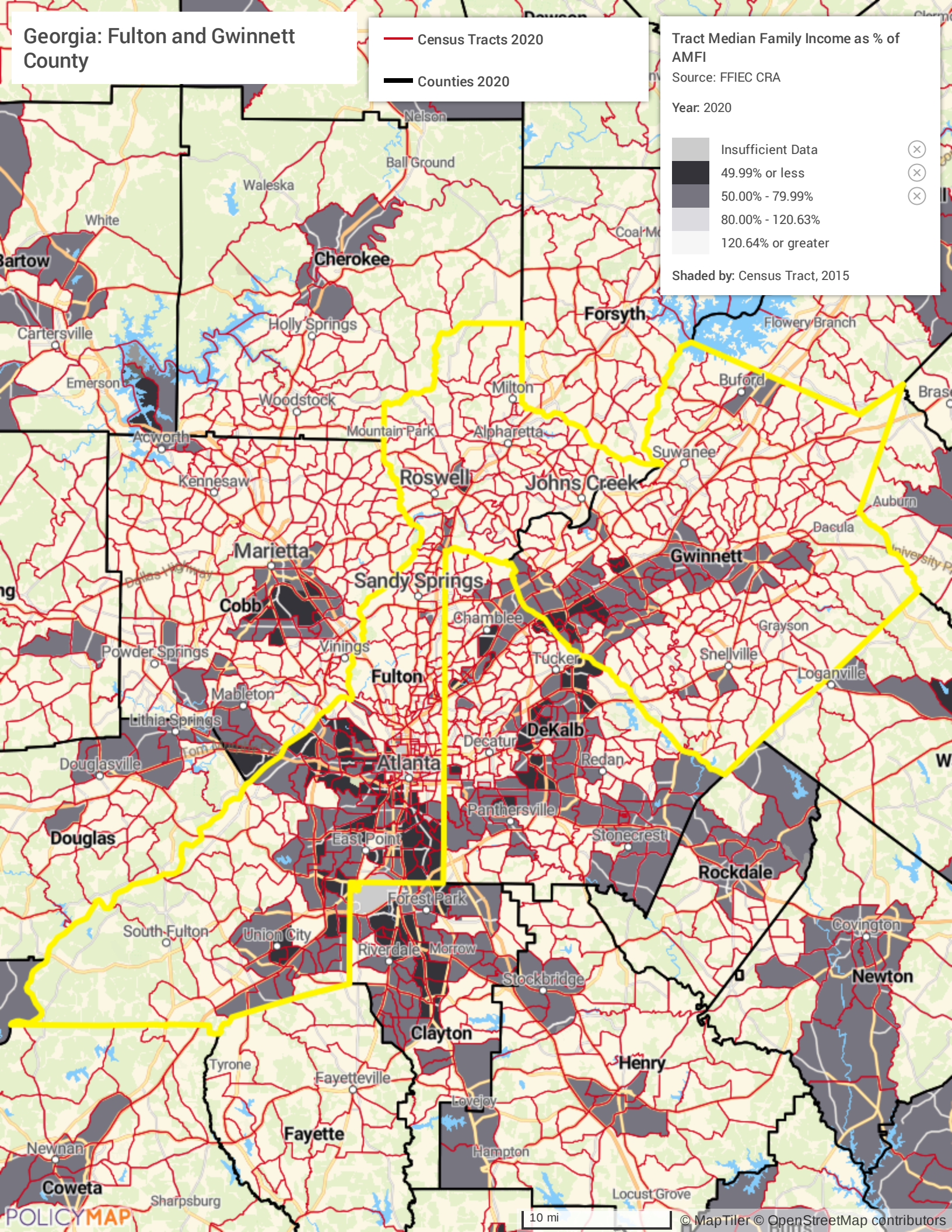
Tract Median Family Income as % of AMFI

Source: FFIEC CRA

Year: 2020

- Insufficient Data
- 49.99% or less
- 50.00% - 79.99%
- 80.00% - 120.63%
- 120.64% or greater

Shaded by: Census Tract, 2015



State	MSA	County	Census Tract	Town	Minority Tract	Tract Income Catg	Percent Median
13	12060	121	0001.00	Atlanta	20% - <50%	>120%	238.5465
13	12060	121	0002.01	Atlanta	10% - <20%	>120%	243.6378
13	12060	121	0002.02	Atlanta	10% - <20%	>120%	294.8437
13	12060	121	0004.00	Atlanta	20% - <50%	>120%	212.5426
13	12060	121	0005.01	Atlanta	50% - <80%	>120%	230.0409
13	12060	121	0005.02	Atlanta	20% - <50%	>120%	167.8574
13	12060	121	0006.01	Atlanta	50% - <80%	>120%	121.5176
13	12060	121	0006.02	Atlanta	50% - <80%	>120%	142.4785
13	12060	121	0007.00	Atlanta	50% - <80%	>120%	134.1533
13	12060	121	0010.01	Atlanta	20% - <50%	>120%	208.298
13	12060	121	0010.02	Atlanta	20% - <50%	N/A	0
13	12060	121	0011.01	Atlanta	20% - <50%	>120%	200.9541
13	12060	121	0011.02	Atlanta	20% - <50%	>120%	200.5637
13	12060	121	0012.03	Atlanta	20% - <50%	>120%	179.2867
13	12060	121	0012.04	Atlanta	20% - <50%	>120%	158.2514
13	12060	121	0012.05	Atlanta	20% - <50%	N/A	0
13	12060	121	0012.06	Atlanta	20% - <50%	>120%	177.0529
13	12060	121	0013.01	Atlanta	20% - <50%	N/A	0
13	12060	121	0013.02	Atlanta	20% - <50%	>120%	124.8776
13	12060	121	0014.00	Atlanta	20% - <50%	>120%	187.0776
13	12060	121	0015.01	Atlanta	20% - <50%	N/A	0
13	12060	121	0015.02	Atlanta	20% - <50%	>120%	294.8437
13	12060	121	0016.00	Atlanta	20% - <50%	>120%	137.5936
13	12060	121	0017.01	Atlanta	50% - <80%	N/A	0
13	12060	121	0017.02	Atlanta	20% - <50%	>120%	171.2917
13	12060	121	0018.01	Atlanta	50% - <80%	N/A	0
13	12060	121	0018.02	Atlanta	50% - <80%	>120%	131.1235
13	12060	121	0019.01	Atlanta	20% - <50%	N/A	0
13	12060	121	0019.02	Atlanta	50% - <80%	>120%	191.0061
13	12060	121	0021.00	Atlanta	50% - <80%	>120%	188.1319
13	12060	121	0023.00	Atlanta	80% - 100%	<50%	27.3177
13	12060	121	0024.00	Atlanta	80% - 100%	<50%	44.9906
13	12060	121	0025.00	Atlanta	80% - 100%	<50%	40.943
13	12060	121	0026.00	Atlanta	80% - 100%	<50%	28.01
13	12060	121	0028.01	Atlanta	50% - <80%	N/A	0
13	12060	121	0028.02	Atlanta	50% - <80%	N/A	0
13	12060	121	0029.00	Atlanta	20% - <50%	>120%	165.2097
13	12060	121	0030.00	Atlanta	20% - <50%	>120%	185.6281
13	12060	121	0031.00	Atlanta	20% - <50%	>120%	172.0123
13	12060	121	0032.00	Atlanta	20% - <50%	>120%	157.164
13	12060	121	0035.00	Atlanta	50% - <80%	>120%	154.7923
13	12060	121	0036.00	Atlanta	80% - 100%	>120%	134.092
13	12060	121	0037.00	Atlanta	80% - 100%	N/A	0
13	12060	121	0038.00	Atlanta	80% - 100%	50% - 80%	77.0282
13	12060	121	0039.00	Atlanta	80% - 100%	<50%	49.0335
13	12060	121	0040.00	Atlanta	80% - 100%	50% - 80%	59.8105
13	12060	121	0041.00	Atlanta	80% - 100%	80% - 120%	93.662
13	12060	121	0042.00	Atlanta	80% - 100%	<50%	34.802
13	12060	121	0043.00	Atlanta	80% - 100%	<50%	38.7635
13	12060	121	0044.00	Atlanta	80% - 100%	<50%	30.7768
13	12060	121	0048.00	Atlanta	80% - 100%	N/A	0
13	12060	121	0049.00	Atlanta	20% - <50%	>120%	188.1732
13	12060	121	0050.00	Atlanta	20% - <50%	>120%	126.7823
13	12060	121	0052.00	Atlanta	20% - <50%	>120%	182.1632
13	12060	121	0053.00	Atlanta	20% - <50%	>120%	184.1127
13	12060	121	0055.01	Atlanta	50% - <80%	<50%	36.6972
13	12060	121	0055.03	Atlanta	80% - 100%	<50%	27.6821

State	MSA	County	Census Tract	Town	Minority Tract	Tract Income Catg	Percent Median
13	12060	121	0055.04	Atlanta	80% - 100%	50% - 80%	58.9685
13	12060	121	0057.00	Atlanta	80% - 100%	<50%	45.3621
13	12060	121	0058.00	Atlanta	50% - <80%	50% - 80%	54.5458
13	12060	121	0060.00	Atlanta	80% - 100%	50% - 80%	56.4541
13	12060	121	0061.00	Atlanta	80% - 100%	<50%	36.7739
13	12060	121	0062.00	Atlanta	80% - 100%	N/A	0
13	12060	121	0063.00	Atlanta	80% - 100%	<50%	45.4894
13	12060	121	0064.00	Atlanta	50% - <80%	50% - 80%	64.3735
13	12060	121	0065.00	Atlanta	50% - <80%	50% - 80%	51.2672
13	12060	121	0066.01	Atlanta	80% - 100%	80% - 120%	80.9944
13	12060	121	0066.02	Atlanta	80% - 100%	<50%	35.9342
13	12060	121	0067.01	Atlanta	80% - 100%	50% - 80%	64.9066
13	12060	121	0067.02	Atlanta	80% - 100%	N/A	0
13	12060	121	0068.01	Atlanta	50% - <80%	N/A	0
13	12060	121	0068.02	Atlanta	80% - 100%	<50%	16.1809
13	12060	121	0069.00	Atlanta	50% - <80%	80% - 120%	104.0959
13	12060	121	0070.01	Atlanta	80% - 100%	<50%	44.6379
13	12060	121	0070.02	Atlanta	80% - 100%	<50%	45.6027
13	12060	121	0071.00	Atlanta	80% - 100%	<50%	33.375
13	12060	121	0072.00	Atlanta	80% - 100%	50% - 80%	50.4794
13	12060	121	0073.01	Atlanta	80% - 100%	<50%	48.9344
13	12060	121	0073.02	Atlanta	80% - 100%	<50%	36.472
13	12060	121	0074.00	Atlanta	80% - 100%	<50%	34.2512
13	12060	121	0075.00	Atlanta	80% - 100%	<50%	41.6471
13	12060	121	0076.02	Atlanta	80% - 100%	<50%	48.669
13	12060	121	0076.03	Atlanta	80% - 100%	<50%	21.9457
13	12060	121	0076.04	Atlanta	80% - 100%	<50%	31.5835
13	12060	121	0077.03	Atlanta	80% - 100%	50% - 80%	57.565
13	12060	121	0077.05	Atlanta	80% - 100%	<50%	36.1453
13	12060	121	0077.07	Atlanta	80% - 100%	50% - 80%	71.8826
13	12060	121	0077.08	Atlanta	80% - 100%	50% - 80%	70.1607
13	12060	121	0077.09	Atlanta	80% - 100%	80% - 120%	82.1113
13	12060	121	0077.10	Atlanta	80% - 100%	N/A	0
13	12060	121	0077.11	Atlanta	80% - 100%	50% - 80%	71.4226
13	12060	121	0078.05	Atlanta	80% - 100%	50% - 80%	68.1275
13	12060	121	0078.06	Atlanta	80% - 100%	80% - 120%	83.0135
13	12060	121	0078.07	Atlanta	80% - 100%	50% - 80%	52.5562
13	12060	121	0078.08	Atlanta	80% - 100%	<50%	15.0723
13	12060	121	0078.09	Atlanta	80% - 100%	80% - 120%	80.0733
13	12060	121	0078.10	Atlanta	80% - 100%	50% - 80%	58.3918
13	12060	121	0079.00	Atlanta	80% - 100%	80% - 120%	85.6388
13	12060	121	0080.00	Atlanta	80% - 100%	50% - 80%	61.0194
13	12060	121	0081.03	Atlanta	80% - 100%	50% - 80%	54.764
13	12060	121	0081.04	Atlanta	80% - 100%	50% - 80%	50.155
13	12060	121	0082.02	Atlanta	80% - 100%	<50%	30.6553
13	12060	121	0082.03	Atlanta	80% - 100%	50% - 80%	53.9762
13	12060	121	0082.04	Atlanta	80% - 100%	50% - 80%	73.8639
13	12060	121	0083.01	Atlanta	80% - 100%	50% - 80%	51.5974
13	12060	121	0083.02	Atlanta	80% - 100%	<50%	35.065
13	12060	121	0084.00	Atlanta	80% - 100%	N/A	0
13	12060	121	0085.00	Atlanta	80% - 100%	<50%	42.4361
13	12060	121	0086.01	Atlanta	80% - 100%	<50%	24.3539
13	12060	121	0086.02	Atlanta	80% - 100%	<50%	37.6702
13	12060	121	0087.01	Atlanta	80% - 100%	<50%	36.8553
13	12060	121	0087.02	Atlanta	80% - 100%	N/A	0
13	12060	121	0088.01	Atlanta	50% - <80%	>120%	169.7373
13	12060	121	0088.02	Atlanta	20% - <50%	>120%	228.0112

State	MSA	County	Census Tract	Town	Minority Tract	Tract Income Catg	Percent Median
13	12060	121	0089.03	Atlanta	50% - <80%	50% - 80%	76.751
13	12060	121	0089.05	Atlanta	50% - <80%	>120%	125.4319
13	12060	121	0089.06	Atlanta	10% - <20%	>120%	210.8855
13	12060	121	0089.07	Atlanta	20% - <50%	80% - 120%	93.8307
13	12060	121	0089.08	Atlanta	50% - <80%	N/A	0
13	12060	121	0089.09	Atlanta	20% - <50%	>120%	222.5012
13	12060	121	0090.01	Atlanta	20% - <50%	>120%	200.7382
13	12060	121	0090.02	Atlanta	<10%	>120%	294.8437
13	12060	121	0091.03	Atlanta	20% - <50%	>120%	202.6476
13	12060	121	0091.04	Atlanta	20% - <50%	>120%	127.9499
13	12060	121	0091.05	Atlanta	10% - <20%	>120%	294.8437
13	12060	121	0091.06	Atlanta	50% - <80%	80% - 120%	99.1319
13	12060	121	0092.01	Atlanta	50% - <80%	N/A	0
13	12060	121	0092.02	Atlanta	20% - <50%	>120%	176.7923
13	12060	121	0092.03	Atlanta	50% - <80%	>120%	176.7133
13	12060	121	0093.01	Atlanta	10% - <20%	>120%	294.8437
13	12060	121	0093.02	Atlanta	20% - <50%	>120%	279.3787
13	12060	121	0094.05	Atlanta	50% - <80%	80% - 120%	100.6156
13	12060	121	0094.06	Atlanta	50% - <80%	N/A	0
13	12060	121	0094.07	Atlanta	50% - <80%	>120%	137.4367
13	12060	121	0094.08	Atlanta	50% - <80%	>120%	134.6003
13	12060	121	0094.09	Atlanta	50% - <80%	80% - 120%	80.709
13	12060	121	0094.10	Atlanta	20% - <50%	N/A	0
13	12060	121	0094.11	Atlanta	20% - <50%	>120%	124.7632
13	12060	121	0095.01	Atlanta	10% - <20%	>120%	294.8437
13	12060	121	0095.03	Atlanta	20% - <50%	N/A	0
13	12060	121	0095.04	Atlanta	20% - <50%	N/A	0
13	12060	121	0096.01	Atlanta	20% - <50%	>120%	152.6305
13	12060	121	0096.04	Atlanta	20% - <50%	>120%	242.5516
13	12060	121	0096.05	Atlanta	20% - <50%	N/A	0
13	12060	121	0096.06	Atlanta	10% - <20%	>120%	294.8437
13	12060	121	0096.07	Atlanta	20% - <50%	>120%	158.2939
13	12060	121	0097.00	Atlanta	20% - <50%	>120%	294.8437
13	12060	121	0098.02	Atlanta	20% - <50%	>120%	292.7126
13	12060	121	0098.03	Atlanta	20% - <50%	>120%	284.3532
13	12060	121	0098.04	Atlanta	10% - <20%	>120%	294.8437
13	12060	121	0099.00	Atlanta	10% - <20%	>120%	294.8437
13	12060	121	0100.03	Atlanta	20% - <50%	>120%	212.736
13	12060	121	0100.04	Atlanta	10% - <20%	>120%	294.8437
13	12060	121	0100.05	Atlanta	10% - <20%	>120%	294.8437
13	12060	121	0100.06	Atlanta	20% - <50%	50% - 80%	72.2989
13	12060	121	0100.07	Atlanta	10% - <20%	>120%	294.8437
13	12060	121	0101.06	Atlanta	20% - <50%	>120%	162.4217
13	12060	121	0101.07	Atlanta	10% - <20%	>120%	255.9398
13	12060	121	0101.08	Atlanta	20% - <50%	>120%	192.1394
13	12060	121	0101.15	Atlanta	20% - <50%	>120%	203.2727
13	12060	121	0101.17	Atlanta	50% - <80%	80% - 120%	82.353
13	12060	121	0101.20	Atlanta	20% - <50%	>120%	150.0748
13	12060	121	0101.21	Atlanta	20% - <50%	>120%	222.1143
13	12060	121	0101.24	Atlanta	50% - <80%	N/A	0
13	12060	121	0101.25	Atlanta	50% - <80%	50% - 80%	59.1914
13	12060	121	0101.26	Atlanta	50% - <80%	80% - 120%	104.1454
13	12060	121	0101.27	Atlanta	20% - <50%	>120%	136.4814
13	12060	121	0101.28	Atlanta	80% - 100%	50% - 80%	67.4458
13	12060	121	0101.29	Atlanta	50% - <80%	>120%	135.5745
13	12060	121	0101.30	Atlanta	50% - <80%	>120%	145.947
13	12060	121	0101.31	Atlanta	50% - <80%	>120%	236.3434

State	MSA	County	Census Tract	Town	Minority Tract	Tract Income Catg	Percent Median
13	12060	121	0101.32	Atlanta	20% - <50%	>120%	172.7282
13	12060	121	0101.33	Atlanta	20% - <50%	>120%	131.4314
13	12060	121	0101.34	Atlanta	50% - <80%	80% - 120%	101.0543
13	12060	121	0101.35	Atlanta	50% - <80%	50% - 80%	79.1298
13	12060	121	0101.36	Atlanta	20% - <50%	>120%	223.6923
13	12060	121	0101.37	Atlanta	20% - <50%	>120%	124.2997
13	12060	121	0102.04	Atlanta	10% - <20%	>120%	186.1294
13	12060	121	0102.11	Atlanta	20% - <50%	>120%	294.8437
13	12060	121	0102.12	Atlanta	50% - <80%	>120%	131.0481
13	12060	121	0102.13	Atlanta	50% - <80%	80% - 120%	80.7597
13	12060	121	0102.14	Atlanta	50% - <80%	80% - 120%	101.598
13	12060	121	0102.15	Atlanta	20% - <50%	>120%	262.4476
13	12060	121	0102.16	Atlanta	20% - <50%	80% - 120%	111.487
13	12060	121	0102.17	Atlanta	20% - <50%	>120%	157.9566
13	12060	121	0102.18	Atlanta	20% - <50%	>120%	294.8437
13	12060	121	0102.19	Atlanta	50% - <80%	80% - 120%	107.5857
13	12060	121	0102.20	Atlanta	20% - <50%	>120%	178.7206
13	12060	121	0102.21	Atlanta	20% - <50%	80% - 120%	103.4779
13	12060	121	0102.22	Atlanta	10% - <20%	>120%	261.8332
13	12060	121	0102.23	Atlanta	20% - <50%	>120%	277.8219
13	12060	121	0103.05	Atlanta	80% - 100%	80% - 120%	80.6028
13	12060	121	0103.06	Atlanta	80% - 100%	>120%	143.4303
13	12060	121	0103.07	Atlanta	80% - 100%	80% - 120%	103.0769
13	12060	121	0103.08	Atlanta	80% - 100%	80% - 120%	113.7998
13	12060	121	0103.09	Atlanta	80% - 100%	80% - 120%	104.813
13	12060	121	0103.10	Atlanta	80% - 100%	80% - 120%	102.2997
13	12060	121	0103.11	Atlanta	80% - 100%	80% - 120%	104.8719
13	12060	121	0103.12	Atlanta	80% - 100%	>120%	175.1034
13	12060	121	0103.13	Atlanta	80% - 100%	>120%	147.446
13	12060	121	0103.14	Atlanta	80% - 100%	N/A	0
13	12060	121	0103.15	Atlanta	80% - 100%	80% - 120%	97.9136
13	12060	121	0104.01	Palmetto	80% - 100%	50% - 80%	78.7276
13	12060	121	0104.02	Palmetto	20% - <50%	50% - 80%	78.4045
13	12060	121	0105.08	Fairburn-Union City	80% - 100%	50% - 80%	77.4527
13	12060	121	0105.17	Fairburn-Union City	80% - 100%	50% - 80%	72.2364
13	12060	121	0105.18	Fairburn-Union City	80% - 100%	50% - 80%	70.6997
13	12060	121	0105.19	Fairburn-Union City	80% - 100%	N/A	0
13	12060	121	0105.20	Fairburn-Union City	80% - 100%	50% - 80%	56.3102
13	12060	121	0105.21	Fairburn-Union City	80% - 100%	50% - 80%	67.2241
13	12060	121	0105.22	Fairburn-Union City	80% - 100%	50% - 80%	50.5879
13	12060	121	0105.23	Fairburn-Union City	80% - 100%	<50%	49.4226
13	12060	121	0105.24	Fairburn-Union City	80% - 100%	50% - 80%	51.838
13	12060	121	0105.25	Fairburn-Union City	80% - 100%	<50%	47.1748
13	12060	121	0105.26	Fairburn-Union City	80% - 100%	50% - 80%	78.5637
13	12060	121	0105.27	Fairburn-Union City	80% - 100%	N/A	0
13	12060	121	0105.28	Fairburn-Union City	80% - 100%	<50%	31.6212
13	12060	121	0105.29	Fairburn-Union City	80% - 100%	50% - 80%	72.9169
13	12060	121	0105.30	Fairburn-Union City	80% - 100%	50% - 80%	74.5597
13	12060	121	0105.31	Fairburn-Union City	80% - 100%	N/A	0
13	12060	121	0105.32	Fairburn-Union City	80% - 100%	<50%	34.2607
13	12060	121	0105.33	Fairburn-Union City	80% - 100%	50% - 80%	64.3606
13	12060	121	0105.34	Fairburn-Union City	80% - 100%	N/A	0
13	12060	121	0105.35	Fairburn-Union City	80% - 100%	>120%	130.0185
13	12060	121	0105.36	Fairburn-Union City	80% - 100%	80% - 120%	96.7189
13	12060	121	0105.37	Fairburn-Union City	80% - 100%	80% - 120%	100.6356
13	12060	121	0105.38	Fairburn-Union City	80% - 100%	>120%	125.8506
13	12060	121	0105.39	Fairburn-Union City	80% - 100%	80% - 120%	88.6414

State	MSA	County	Census Tract	Town	Minority Tract	Tract Income Catg	Percent Median
13	12060	121	0105.40	Fairburn-Union City	80% - 100%	>120%	150.6539
13	12060	121	0106.01	College Park	50% - <80%	80% - 120%	94.9393
13	12060	121	0106.03	College Park	80% - 100%	50% - 80%	66.8313
13	12060	121	0106.04	College Park	80% - 100%	50% - 80%	59.5051
13	12060	121	0108.01	Atlanta	50% - <80%	<50%	49.8602
13	12060	121	0108.02	Atlanta	50% - <80%	80% - 120%	97.1872
13	12060	121	0110.00	East Point	80% - 100%	<50%	43.7829
13	12060	121	0111.00	East Point	50% - <80%	80% - 120%	91.1063
13	12060	121	0112.02	East Point	80% - 100%	50% - 80%	64.5186
13	12060	121	0112.03	East Point	80% - 100%	50% - 80%	68.6806
13	12060	121	0112.04	East Point	80% - 100%	50% - 80%	68.5509
13	12060	121	0113.01	East Point	80% - 100%	50% - 80%	64.607
13	12060	121	0113.06	East Point	80% - 100%	50% - 80%	63.1647
13	12060	121	0113.07	East Point	80% - 100%	<50%	38.3295
13	12060	121	0113.08	East Point	80% - 100%	<50%	49.6455
13	12060	121	0113.09	East Point	80% - 100%	80% - 120%	92.7409
13	12060	121	0113.10	East Point	80% - 100%	<50%	47.0863
13	12060	121	0114.16	Roswell-Alpharetta	20% - <50%	>120%	144.1167
13	12060	121	0114.17	Roswell-Alpharetta	20% - <50%	>120%	141.1081
13	12060	121	0114.19	Roswell-Alpharetta	20% - <50%	>120%	169.2738
13	12060	121	0114.21	Roswell-Alpharetta	50% - <80%	80% - 120%	86.1683
13	12060	121	0114.22	Roswell-Alpharetta	20% - <50%	>120%	120.7333
13	12060	121	0114.23	Roswell-Alpharetta	20% - <50%	>120%	194.9145
13	12060	121	0114.24	Roswell-Alpharetta	20% - <50%	>120%	150.1114
13	12060	121	0114.26	Roswell-Alpharetta	20% - <50%	>120%	187.5788
13	12060	121	0114.28	Roswell-Alpharetta	20% - <50%	>120%	191.3033
13	12060	121	0114.29	Roswell-Alpharetta	20% - <50%	>120%	148.36
13	12060	121	0114.30	Roswell-Alpharetta	80% - 100%	50% - 80%	58.3175
13	12060	121	0114.31	Roswell-Alpharetta	80% - 100%	80% - 120%	80.9484
13	12060	121	0114.32	Roswell-Alpharetta	50% - <80%	50% - 80%	74.2472
13	12060	121	0114.33	Roswell-Alpharetta	20% - <50%	>120%	159.215
13	12060	121	0114.34	Roswell-Alpharetta	20% - <50%	>120%	122.7524
13	12060	121	0114.35	Roswell-Alpharetta	20% - <50%	50% - 80%	76.3123
13	12060	121	0114.36	Roswell-Alpharetta	20% - <50%	>120%	152.0703
13	12060	121	0114.37	Roswell-Alpharetta	20% - <50%	>120%	132.4609
13	12060	121	0114.38	Roswell-Alpharetta	50% - <80%	>120%	136.2762
13	12060	121	0114.39	Roswell-Alpharetta	20% - <50%	>120%	135.1747
13	12060	121	0114.40	Roswell-Alpharetta	20% - <50%	>120%	169.8293
13	12060	121	0114.41	Roswell-Alpharetta	20% - <50%	>120%	160.3354
13	12060	121	0114.42	Roswell-Alpharetta	20% - <50%	>120%	126.3459
13	12060	121	0114.43	Roswell-Alpharetta	20% - <50%	>120%	193.9639
13	12060	121	0114.44	Roswell-Alpharetta	20% - <50%	>120%	287.2262
13	12060	121	0114.45	Roswell-Alpharetta	10% - <20%	>120%	218.4559
13	12060	121	0114.46	Roswell-Alpharetta	10% - <20%	>120%	209.0823
13	12060	121	0115.05	Roswell-Alpharetta	20% - <50%	>120%	205.9357
13	12060	121	0115.07	Roswell-Alpharetta	10% - <20%	>120%	294.8437
13	12060	121	0115.08	Roswell-Alpharetta	20% - <50%	>120%	294.8437
13	12060	121	0115.09	Roswell-Alpharetta	20% - <50%	>120%	229.7401
13	12060	121	0115.10	Roswell-Alpharetta	20% - <50%	>120%	222.8561
13	12060	121	0115.11	Roswell-Alpharetta	20% - <50%	>120%	172.4109
13	12060	121	0115.12	Roswell-Alpharetta	10% - <20%	>120%	243.3017
13	12060	121	0115.13	Roswell-Alpharetta	10% - <20%	>120%	177.908
13	12060	121	0115.14	Roswell-Alpharetta	10% - <20%	>120%	250.727
13	12060	121	0115.15	Roswell-Alpharetta	10% - <20%	>120%	294.8437
13	12060	121	0116.12	Roswell-Alpharetta	20% - <50%	>120%	190.7266
13	12060	121	0116.18	Roswell-Alpharetta	50% - <80%	>120%	171.7458
13	12060	121	0116.24	Roswell-Alpharetta	20% - <50%	>120%	235.0638

State	MSA	County	Census Tract	Town	Minority Tract	Tract Income Catg	Percent Median
13	12060	121	0116.27	Roswell-Alpharetta	50% - <80%	>120%	135.7549
13	12060	121	0116.28	Roswell-Alpharetta	50% - <80%	80% - 120%	116.5501
13	12060	121	0116.29	Roswell-Alpharetta	50% - <80%	>120%	202.3363
13	12060	121	0116.30	Roswell-Alpharetta	50% - <80%	>120%	151.174
13	12060	121	0116.31	Roswell-Alpharetta	50% - <80%	>120%	136.9697
13	12060	121	0116.32	Roswell-Alpharetta	50% - <80%	>120%	155.4127
13	12060	121	0116.33	Roswell-Alpharetta	20% - <50%	>120%	158.7397
13	12060	121	0116.34	Roswell-Alpharetta	50% - <80%	80% - 120%	119.1058
13	12060	121	0116.35	Roswell-Alpharetta	80% - 100%	>120%	166.0282
13	12060	121	0116.36	Roswell-Alpharetta	50% - <80%	80% - 120%	82.6962
13	12060	121	0116.37	Roswell-Alpharetta	20% - <50%	>120%	286.4985
13	12060	121	0116.38	Roswell-Alpharetta	20% - <50%	>120%	134.9954
13	12060	121	0116.39	Roswell-Alpharetta	20% - <50%	>120%	147.7114
13	12060	121	0116.40	Roswell-Alpharetta	20% - <50%	>120%	134
13	12060	121	0116.41	Roswell-Alpharetta	20% - <50%	>120%	294.8437
13	12060	121	0116.42	Roswell-Alpharetta	20% - <50%	>120%	146.6098
13	12060	121	0116.43	Roswell-Alpharetta	50% - <80%	80% - 120%	89.5625
13	12060	121	0116.44	Roswell-Alpharetta	50% - <80%	80% - 120%	101.7702
13	12060	121	0116.45	Roswell-Alpharetta	50% - <80%	>120%	149.1467
13	12060	121	0116.46	Roswell-Alpharetta	20% - <50%	80% - 120%	104.9793
13	12060	121	0116.47	Roswell-Alpharetta	50% - <80%	50% - 80%	75.837
13	12060	121	0116.48	Roswell-Alpharetta	50% - <80%	>120%	174.3557
13	12060	121	0116.49	Roswell-Alpharetta	50% - <80%	>120%	179.1864
13	12060	121	0116.50	Roswell-Alpharetta	50% - <80%	>120%	246.2183
13	12060	121	0116.51	Roswell-Alpharetta	50% - <80%	>120%	164.7049
13	12060	121	0116.52	Roswell-Alpharetta	50% - <80%	>120%	162.6328
13	12060	121	0116.53	Roswell-Alpharetta	20% - <50%	>120%	258.3941
13	12060	121	0116.54	Roswell-Alpharetta	20% - <50%	>120%	138.576
13	12060	121	0116.55	Roswell-Alpharetta	20% - <50%	>120%	181.5452
13	12060	121	0116.56	Roswell-Alpharetta	20% - <50%	>120%	217.7294
13	12060	121	0116.57	Roswell-Alpharetta	50% - <80%	>120%	173.8769
13	12060	121	0116.58	Roswell-Alpharetta	50% - <80%	>120%	137.669
13	12060	121	0116.59	Roswell-Alpharetta	20% - <50%	>120%	174.0255
13	12060	121	0116.60	Roswell-Alpharetta	20% - <50%	>120%	146.8481
13	12060	121	0116.61	Roswell-Alpharetta	20% - <50%	>120%	214.5345
13	12060	121	0118.01	Atlanta	50% - <80%	N/A	0
13	12060	121	0118.02	Atlanta	80% - 100%	<50%	45.5779
13	12060	121	0119.01	Atlanta	50% - <80%	N/A	0
13	12060	121	0119.02	Atlanta	50% - <80%	N/A	0
13	12060	121	0120.00	Atlanta	80% - 100%	<50%	29.2342
13	12060	121	0123.00	College Park	50% - <80%	80% - 120%	93.7599
13	12060	121	9800.00	Atlanta	N/A	N/A	0
13	12060	135	0501.05	Buford	50% - <80%	50% - 80%	64.4773
13	12060	135	0501.10	Buford	20% - <50%	80% - 120%	118.45
13	12060	135	0501.11	Buford	50% - <80%	50% - 80%	58.7491
13	12060	135	0501.12	Buford	50% - <80%	80% - 120%	98.0351
13	12060	135	0501.13	Buford	50% - <80%	80% - 120%	87.3771
13	12060	135	0501.14	Buford	20% - <50%	>120%	128.9016
13	12060	135	0501.15	Buford	50% - <80%	N/A	0
13	12060	135	0501.16	Buford	20% - <50%	>120%	169.1323
13	12060	135	0501.17	Buford	20% - <50%	>120%	134.6581
13	12060	135	0501.18	Buford	50% - <80%	80% - 120%	90.848
13	12060	135	0501.19	Buford	50% - <80%	80% - 120%	110.3796
13	12060	135	0501.20	Buford	20% - <50%	>120%	128.03
13	12060	135	0501.21	Buford	20% - <50%	80% - 120%	107.4418
13	12060	135	0502.05	Suwanee-Duluth	50% - <80%	80% - 120%	88.9893
13	12060	135	0502.15	Suwanee-Duluth	80% - 100%	50% - 80%	78.7442



State	MSA	County	Census Tract	Town	Minority Tract	Tract Income Catg	Percent Median
13	12060	135	0502.18	Suwanee-Duluth	50% - <80%	80% - 120%	89.4458
13	12060	135	0502.19	Suwanee-Duluth	50% - <80%	80% - 120%	103.4838
13	12060	135	0502.21	Suwanee-Duluth	50% - <80%	80% - 120%	86.3193
13	12060	135	0502.22	Suwanee-Duluth	50% - <80%	80% - 120%	98.5517
13	12060	135	0502.23	Suwanee-Duluth	50% - <80%	50% - 80%	77.6521
13	12060	135	0502.24	Suwanee-Duluth	50% - <80%	>120%	142.3004
13	12060	135	0502.25	Suwanee-Duluth	50% - <80%	80% - 120%	104.3011
13	12060	135	0502.26	Suwanee-Duluth	50% - <80%	80% - 120%	98.8866
13	12060	135	0502.27	Suwanee-Duluth	20% - <50%	>120%	128.9618
13	12060	135	0502.28	Suwanee-Duluth	50% - <80%	50% - 80%	57.1817
13	12060	135	0502.29	Suwanee-Duluth	80% - 100%	<50%	48.5145
13	12060	135	0502.30	Suwanee-Duluth	80% - 100%	50% - 80%	54.698
13	12060	135	0502.31	Suwanee-Duluth	50% - <80%	>120%	122.3596
13	12060	135	0502.32	Suwanee-Duluth	50% - <80%	80% - 120%	111.9057
13	12060	135	0502.33	Suwanee-Duluth	50% - <80%	80% - 120%	98.9067
13	12060	135	0502.34	Suwanee-Duluth	50% - <80%	>120%	151.5337
13	12060	135	0502.35	Suwanee-Duluth	50% - <80%	>120%	133.8502
13	12060	135	0502.36	Suwanee-Duluth	80% - 100%	80% - 120%	95.9217
13	12060	135	0502.37	Suwanee-Duluth	50% - <80%	80% - 120%	107.2861
13	12060	135	0502.38	Suwanee-Duluth	50% - <80%	80% - 120%	94.8414
13	12060	135	0502.39	Suwanee-Duluth	50% - <80%	>120%	166.0329
13	12060	135	0502.40	Suwanee-Duluth	50% - <80%	>120%	177.3702
13	12060	135	0502.41	Suwanee-Duluth	50% - <80%	80% - 120%	119.7697
13	12060	135	0502.42	Suwanee-Duluth	50% - <80%	>120%	147.4649
13	12060	135	0502.43	Suwanee-Duluth	20% - <50%	>120%	206.2978
13	12060	135	0502.44	Suwanee-Duluth	50% - <80%	>120%	183.6621
13	12060	135	0503.06	Norcross	80% - 100%	50% - 80%	67.0354
13	12060	135	0503.08	Norcross	20% - <50%	>120%	207.6529
13	12060	135	0503.11	Norcross	20% - <50%	>120%	158.4779
13	12060	135	0503.15	Norcross	50% - <80%	50% - 80%	67.2606
13	12060	135	0503.17	Norcross	80% - 100%	50% - 80%	70.4862
13	12060	135	0503.18	Norcross	80% - 100%	50% - 80%	67.4977
13	12060	135	0503.21	Norcross	20% - <50%	>120%	176.9055
13	12060	135	0503.22	Norcross	20% - <50%	>120%	193.9262
13	12060	135	0503.23	Norcross	20% - <50%	>120%	161.8178
13	12060	135	0503.24	Norcross	50% - <80%	80% - 120%	84.2011
13	12060	135	0503.25	Norcross	50% - <80%	50% - 80%	71.1313
13	12060	135	0503.26	Norcross	80% - 100%	50% - 80%	73.7908
13	12060	135	0503.27	Norcross	80% - 100%	50% - 80%	59.3152
13	12060	135	0503.28	Norcross	80% - 100%	50% - 80%	76.7699
13	12060	135	0503.29	Norcross	80% - 100%	<50%	46.3964
13	12060	135	0503.30	Norcross	80% - 100%	50% - 80%	64.3287
13	12060	135	0503.31	Norcross	80% - 100%	50% - 80%	63.3369
13	12060	135	0503.32	Norcross	80% - 100%	50% - 80%	72.8414
13	12060	135	0503.33	Norcross	80% - 100%	50% - 80%	60.4427
13	12060	135	0503.34	Norcross	50% - <80%	80% - 120%	89.8597
13	12060	135	0503.35	Norcross	50% - <80%	50% - 80%	77.6179
13	12060	135	0503.36	Norcross	50% - <80%	>120%	124.2879
13	12060	135	0504.15	Lilburn	50% - <80%	80% - 120%	106.7825
13	12060	135	0504.16	Lilburn	80% - 100%	80% - 120%	92.3588
13	12060	135	0504.25	Lilburn	50% - <80%	>120%	142.7309
13	12060	135	0504.27	Lilburn	50% - <80%	80% - 120%	111.1981
13	12060	135	0504.30	Lilburn	50% - <80%	50% - 80%	78.4281
13	12060	135	0504.33	Lilburn	80% - 100%	50% - 80%	69.8317
13	12060	135	0504.35	Lilburn	80% - 100%	50% - 80%	52.3817
13	12060	135	0504.37	Lilburn	80% - 100%	50% - 80%	69.3281
13	12060	135	0504.38	Lilburn	80% - 100%	50% - 80%	72.5277

State	MSA	County	Census Tract	Town	Minority Tract	Tract Income Catg	Percent Median
13	12060	135	0504.39	Lilburn	80% - 100%	<50%	40.2118
13	12060	135	0504.40	Lilburn	80% - 100%	50% - 80%	51.1799
13	12060	135	0504.41	Lilburn	80% - 100%	50% - 80%	59.7964
13	12060	135	0504.42	Lilburn	50% - <80%	80% - 120%	81.6655
13	12060	135	0504.43	Lilburn	50% - <80%	80% - 120%	98.5835
13	12060	135	0504.44	Lilburn	80% - 100%	50% - 80%	72.1019
13	12060	135	0504.45	Lilburn	80% - 100%	<50%	40.0691
13	12060	135	0504.46	Lilburn	80% - 100%	50% - 80%	76.6708
13	12060	135	0504.47	Lilburn	80% - 100%	50% - 80%	56.4257
13	12060	135	0504.48	Lilburn	80% - 100%	50% - 80%	53.4761
13	12060	135	0504.49	Lilburn	80% - 100%	50% - 80%	56.5508
13	12060	135	0504.50	Lilburn	80% - 100%	80% - 120%	83.0854
13	12060	135	0504.51	Lilburn	80% - 100%	<50%	44.4787
13	12060	135	0504.52	Lilburn	80% - 100%	50% - 80%	62.6363
13	12060	135	0504.53	Lilburn	80% - 100%	50% - 80%	52.8263
13	12060	135	0504.54	Lilburn	80% - 100%	50% - 80%	70.9096
13	12060	135	0504.55	Lilburn	80% - 100%	50% - 80%	66.1626
13	12060	135	0504.56	Lilburn	80% - 100%	50% - 80%	50.8756
13	12060	135	0504.57	Lilburn	50% - <80%	>120%	134.6817
13	12060	135	0504.58	Lilburn	20% - <50%	80% - 120%	115.7516
13	12060	135	0504.59	Lilburn	50% - <80%	50% - 80%	79.6664
13	12060	135	0504.60	Lilburn	80% - 100%	<50%	44.0978
13	12060	135	0504.61	Lilburn	50% - <80%	80% - 120%	115.8247
13	12060	135	0504.62	Lilburn	50% - <80%	>120%	144.2334
13	12060	135	0504.63	Lilburn	80% - 100%	50% - 80%	72.497
13	12060	135	0504.64	Lilburn	80% - 100%	50% - 80%	74.5079
13	12060	135	0504.65	Lilburn	50% - <80%	80% - 120%	98.0505
13	12060	135	0504.66	Lilburn	20% - <50%	80% - 120%	112.9093
13	12060	135	0505.20	Lawrenceville	50% - <80%	80% - 120%	83.293
13	12060	135	0505.21	Lawrenceville	50% - <80%	80% - 120%	81.9532
13	12060	135	0505.22	Lawrenceville	50% - <80%	<50%	38.5901
13	12060	135	0505.26	Lawrenceville	80% - 100%	<50%	47.5463
13	12060	135	0505.28	Lawrenceville	50% - <80%	>120%	144.9387
13	12060	135	0505.29	Lawrenceville	50% - <80%	80% - 120%	88.8219
13	12060	135	0505.30	Lawrenceville	50% - <80%	>120%	126.2905
13	12060	135	0505.36	Lawrenceville	80% - 100%	50% - 80%	65.9645
13	12060	135	0505.37	Lawrenceville	80% - 100%	50% - 80%	53.8087
13	12060	135	0505.39	Lawrenceville	80% - 100%	50% - 80%	61.3944
13	12060	135	0505.41	Lawrenceville	80% - 100%	50% - 80%	60.5264
13	12060	135	0505.42	Lawrenceville	80% - 100%	50% - 80%	53.5351
13	12060	135	0505.49	Lawrenceville	50% - <80%	80% - 120%	102.4507
13	12060	135	0505.50	Lawrenceville	50% - <80%	80% - 120%	83.4699
13	12060	135	0505.51	Lawrenceville	80% - 100%	80% - 120%	118.095
13	12060	135	0505.52	Lawrenceville	50% - <80%	>120%	120.5234
13	12060	135	0505.53	Lawrenceville	50% - <80%	80% - 120%	105.2588
13	12060	135	0505.54	Lawrenceville	80% - 100%	50% - 80%	59.2562
13	12060	135	0505.55	Lawrenceville	80% - 100%	80% - 120%	80.6005
13	12060	135	0505.56	Lawrenceville	80% - 100%	80% - 120%	96.8062
13	12060	135	0505.57	Lawrenceville	50% - <80%	80% - 120%	83.7588
13	12060	135	0505.58	Lawrenceville	50% - <80%	80% - 120%	98.9326
13	12060	135	0505.59	Lawrenceville	80% - 100%	50% - 80%	73.1056
13	12060	135	0505.60	Lawrenceville	50% - <80%	>120%	141.39
13	12060	135	0505.61	Lawrenceville	80% - 100%	50% - 80%	51.3155
13	12060	135	0505.62	Lawrenceville	80% - 100%	50% - 80%	66.7181
13	12060	135	0505.63	Lawrenceville	50% - <80%	80% - 120%	98.2191
13	12060	135	0505.64	Lawrenceville	50% - <80%	<50%	45.4659
13	12060	135	0505.65	Lawrenceville	50% - <80%	80% - 120%	106.8309

State	MSA	County	Census Tract	Town	Minority Tract	Tract Income Catg	Percent Median
13	12060	135	0505.66	Lawrenceville	50% - <80%	80% - 120%	86.9113
13	12060	135	0505.67	Lawrenceville	80% - 100%	50% - 80%	73.1988
13	12060	135	0505.68	Lawrenceville	80% - 100%	80% - 120%	108.3546
13	12060	135	0505.69	Lawrenceville	80% - 100%	50% - 80%	58.209
13	12060	135	0505.70	Lawrenceville	50% - <80%	80% - 120%	108.3546
13	12060	135	0505.71	Lawrenceville	80% - 100%	50% - 80%	67.5425
13	12060	135	0505.72	Lawrenceville	20% - <50%	80% - 120%	95.9288
13	12060	135	0505.73	Lawrenceville	50% - <80%	>120%	140.3391
13	12060	135	0505.74	Lawrenceville	50% - <80%	50% - 80%	51.3155
13	12060	135	0505.75	Lawrenceville	50% - <80%	80% - 120%	96.1186
13	12060	135	0505.76	Lawrenceville	80% - 100%	50% - 80%	78.9116
13	12060	135	0505.77	Lawrenceville	80% - 100%	50% - 80%	61.51
13	12060	135	0505.78	Lawrenceville	50% - <80%	80% - 120%	83.6456
13	12060	135	0505.79	Lawrenceville	50% - <80%	80% - 120%	99.1897
13	12060	135	0505.80	Lawrenceville	50% - <80%	>120%	127.3991
13	12060	135	0505.81	Lawrenceville	50% - <80%	50% - 80%	77.7346
13	12060	135	0505.82	Lawrenceville	50% - <80%	>120%	183.9959
13	12060	135	0505.83	Lawrenceville	50% - <80%	80% - 120%	83.4239
13	12060	135	0505.84	Lawrenceville	20% - <50%	>120%	136.834
13	12060	135	0505.85	Lawrenceville	80% - 100%	80% - 120%	111.4339
13	12060	135	0505.86	Lawrenceville	50% - <80%	50% - 80%	67.7937
13	12060	135	0505.87	Lawrenceville	80% - 100%	80% - 120%	86.5091
13	12060	135	0505.88	Lawrenceville	50% - <80%	80% - 120%	94.3012
13	12060	135	0505.89	Lawrenceville	80% - 100%	80% - 120%	108.7238
13	12060	135	0505.90	Lawrenceville	80% - 100%	80% - 120%	102.972
13	12060	135	0505.91	Lawrenceville	50% - <80%	>120%	161.2942
13	12060	135	0506.11	Dacula-Rocky Creek	50% - <80%	>120%	126.9273
13	12060	135	0506.12	Dacula-Rocky Creek	50% - <80%	80% - 120%	106.2789
13	12060	135	0506.13	Dacula-Rocky Creek	50% - <80%	>120%	128.5407
13	12060	135	0506.14	Dacula-Rocky Creek	20% - <50%	80% - 120%	118.0974
13	12060	135	0506.15	Dacula-Rocky Creek	20% - <50%	80% - 120%	119.4112
13	12060	135	0506.16	Dacula-Rocky Creek	20% - <50%	>120%	134.0979
13	12060	135	0506.17	Dacula-Rocky Creek	20% - <50%	>120%	151.4453
13	12060	135	0506.18	Dacula-Rocky Creek	20% - <50%	>120%	182.4344
13	12060	135	0506.19	Dacula-Rocky Creek	20% - <50%	80% - 120%	111.9953
13	12060	135	0506.20	Dacula-Rocky Creek	20% - <50%	>120%	130.6341
13	12060	135	0506.21	Dacula-Rocky Creek	20% - <50%	>120%	171.813
13	12060	135	0506.22	Dacula-Rocky Creek	20% - <50%	80% - 120%	85.897
13	12060	135	0506.23	Dacula-Rocky Creek	50% - <80%	>120%	123.9093
13	12060	135	0506.24	Dacula-Rocky Creek	50% - <80%	>120%	124.6889
13	12060	135	0506.25	Dacula-Rocky Creek	50% - <80%	>120%	177.0152
13	12060	135	0506.26	Dacula-Rocky Creek	20% - <50%	80% - 120%	116.8697
13	12060	135	0506.27	Dacula-Rocky Creek	50% - <80%	80% - 120%	99.0105
13	12060	135	0506.28	Dacula-Rocky Creek	50% - <80%	80% - 120%	112.5142
13	12060	135	0506.29	Dacula-Rocky Creek	20% - <50%	>120%	146.7242
13	12060	135	0506.30	Dacula-Rocky Creek	50% - <80%	>120%	137.8542
13	12060	135	0506.31	Dacula-Rocky Creek	20% - <50%	80% - 120%	112.1569
13	12060	135	0506.32	Dacula-Rocky Creek	20% - <50%	80% - 120%	112.8492
13	12060	135	0506.33	Dacula-Rocky Creek	50% - <80%	<50%	43.4845
13	12060	135	0506.34	Dacula-Rocky Creek	50% - <80%	50% - 80%	72.4675
13	12060	135	0506.35	Dacula-Rocky Creek	20% - <50%	80% - 120%	99.9445
13	12060	135	0506.36	Dacula-Rocky Creek	50% - <80%	>120%	125.38
13	12060	135	0507.15	Snellville-Grayson	50% - <80%	80% - 120%	84.845
13	12060	135	0507.19	Snellville-Grayson	50% - <80%	50% - 80%	71.8177
13	12060	135	0507.22	Snellville-Grayson	80% - 100%	80% - 120%	89.1604
13	12060	135	0507.25	Snellville-Grayson	80% - 100%	80% - 120%	99.2546
13	12060	135	0507.29	Snellville-Grayson	50% - <80%	80% - 120%	84.148

State	MSA	County	Census Tract	Town	Minority Tract	Tract Income Catg	Percent Median
13	12060	135	0507.32	Snellville-Grayson	80% - 100%	50% - 80%	70.4414
13	12060	135	0507.33	Snellville-Grayson	80% - 100%	80% - 120%	83.5595
13	12060	135	0507.34	Snellville-Grayson	80% - 100%	80% - 120%	93.412
13	12060	135	0507.35	Snellville-Grayson	50% - <80%	50% - 80%	79.3374
13	12060	135	0507.36	Snellville-Grayson	50% - <80%	80% - 120%	89.2358
13	12060	135	0507.37	Snellville-Grayson	80% - 100%	80% - 120%	108.1388
13	12060	135	0507.38	Snellville-Grayson	80% - 100%	>120%	127.0052
13	12060	135	0507.39	Snellville-Grayson	50% - <80%	80% - 120%	90.6405
13	12060	135	0507.40	Snellville-Grayson	50% - <80%	80% - 120%	101.5933
13	12060	135	0507.41	Snellville-Grayson	50% - <80%	>120%	126.9002
13	12060	135	0507.42	Snellville-Grayson	50% - <80%	>120%	137.0039
13	12060	135	0507.43	Snellville-Grayson	50% - <80%	80% - 120%	87.284
13	12060	135	0507.44	Snellville-Grayson	50% - <80%	80% - 120%	106.1433
13	12060	135	0507.45	Snellville-Grayson	50% - <80%	>120%	171.8932
13	12060	135	0507.46	Snellville-Grayson	50% - <80%	>120%	135.7549
13	12060	135	0507.47	Snellville-Grayson	50% - <80%	80% - 120%	111.1662
13	12060	135	0507.48	Snellville-Grayson	50% - <80%	50% - 80%	55.6816
13	12060	135	0507.49	Snellville-Grayson	80% - 100%	50% - 80%	70.2704
13	12060	135	0507.50	Snellville-Grayson	80% - 100%	>120%	141.0326
13	12060	135	0507.51	Snellville-Grayson	80% - 100%	80% - 120%	89.967
13	12060	135	0507.52	Snellville-Grayson	50% - <80%	>120%	126.2433
13	12060	135	0507.53	Snellville-Grayson	50% - <80%	50% - 80%	69.3788
13	12060	135	0507.54	Snellville-Grayson	50% - <80%	80% - 120%	99.4692
13	12060	135	0507.55	Snellville-Grayson	50% - <80%	>120%	125.5758
13	12060	135	0507.56	Snellville-Grayson	50% - <80%	>120%	123.5484
13	12060	135	0507.57	Snellville-Grayson	20% - <50%	>120%	139.7825
13	12060	135	0507.58	Snellville-Grayson	50% - <80%	50% - 80%	66.0612
13	12060	135	0507.59	Snellville-Grayson	50% - <80%	>120%	123.0472
13	12060	135	0507.60	Snellville-Grayson	20% - <50%	>120%	172.7706
13	12060	135	0507.61	Snellville-Grayson	50% - <80%	80% - 120%	118.0349
13	12060	135	0507.62	Snellville-Grayson	20% - <50%	>120%	131.7286
13	12060	135	0507.63	Snellville-Grayson	50% - <80%	80% - 120%	97.3393
13	12060	135	0507.64	Snellville-Grayson	50% - <80%	80% - 120%	99.3772
13	12060	135	0507.65	Snellville-Grayson	20% - <50%	>120%	138.2599