

Appendix B(vi)

Texas

Collin County (085)

Dallas County (113)

Denton County (121)

Tarrant County (439)

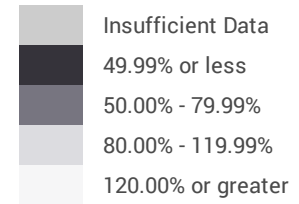
Texas: Denton, Collin, Dallas & Tarrant County

— Counties 2020
— Census Tracts 2020

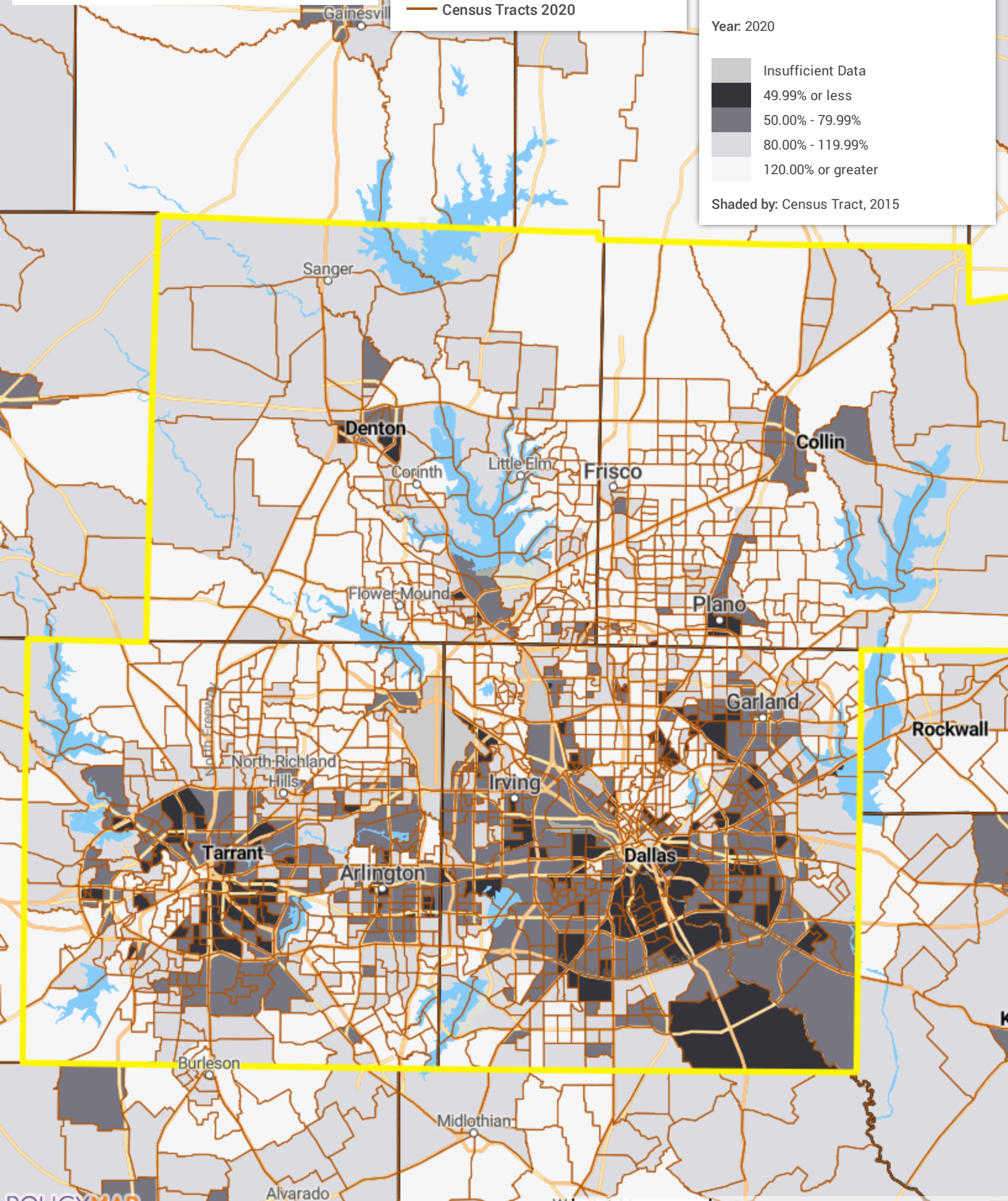
Tract Median Family Income as % of AMFI

Source: FFIEC CRA

Year: 2020



Shaded by: Census Tract, 2015



State	MSA	County	Census Tract	Town	Minority Tract	Tract Income Catg	Percent Median
48	19124	085	0301.01	Blue Ridge	20% - <50%	80% - 120%	89.7763
48	19124	085	0301.02	Blue Ridge	20% - <50%	50% - 80%	76.7027
48	19124	085	0302.01	Anna	20% - <50%	80% - 120%	100.4925
48	19124	085	0302.02	Anna	20% - <50%	>120%	163.9823
48	19124	085	0302.04	Anna	20% - <50%	80% - 120%	112.0534
48	19124	085	0302.05	Anna	20% - <50%	80% - 120%	86.7712
48	19124	085	0302.06	Anna	20% - <50%	>120%	148.6349
48	19124	085	0302.07	Anna	20% - <50%	80% - 120%	100.3
48	19124	085	0303.01	Celina	20% - <50%	>120%	158.8608
48	19124	085	0303.02	Celina	20% - <50%	>120%	214.9419
48	19124	085	0303.03	Celina	20% - <50%	>120%	174.3758
48	19124	085	0303.04	Celina	20% - <50%	>120%	169.4355
48	19124	085	0303.06	Celina	20% - <50%	>120%	144.0978
48	19124	085	0303.07	Celina	20% - <50%	>120%	160.2321
48	19124	085	0304.03	McKinney	20% - <50%	>120%	137.9324
48	19124	085	0304.04	McKinney	20% - <50%	>120%	145.1554
48	19124	085	0304.05	McKinney	50% - <80%	80% - 120%	86.6704
48	19124	085	0304.06	McKinney	50% - <80%	80% - 120%	92.9649
48	19124	085	0304.07	McKinney	20% - <50%	>120%	225.0467
48	19124	085	0304.09	McKinney	50% - <80%	50% - 80%	56.8884
48	19124	085	0304.10	McKinney	50% - <80%	80% - 120%	105.7113
48	19124	085	0305.04	McKinney	20% - <50%	>120%	142.3246
48	19124	085	0305.05	McKinney	50% - <80%	80% - 120%	117.4534
48	19124	085	0305.06	McKinney	50% - <80%	>120%	143.7626
48	19124	085	0305.07	McKinney	20% - <50%	>120%	167.3135
48	19124	085	0305.09	McKinney	20% - <50%	>120%	158.1701
48	19124	085	0305.10	McKinney	50% - <80%	>120%	124.3775
48	19124	085	0305.11	McKinney	50% - <80%	>120%	209.2419
48	19124	085	0305.12	McKinney	20% - <50%	>120%	216.6834
48	19124	085	0305.15	McKinney	20% - <50%	>120%	125.6219
48	19124	085	0305.16	McKinney	50% - <80%	>120%	159.1405
48	19124	085	0305.17	McKinney	20% - <50%	>120%	143.9189
48	19124	085	0305.18	McKinney	50% - <80%	>120%	202.8364
48	19124	085	0305.19	McKinney	50% - <80%	>120%	185.0829
48	19124	085	0305.20	McKinney	50% - <80%	>120%	153.419
48	19124	085	0305.21	McKinney	50% - <80%	>120%	157.8406
48	19124	085	0305.24	McKinney	50% - <80%	>120%	130.0492
48	19124	085	0305.25	McKinney	20% - <50%	>120%	128.3711
48	19124	085	0305.29	McKinney	20% - <50%	>120%	149.722
48	19124	085	0305.31	McKinney	20% - <50%	>120%	171.9968
48	19124	085	0305.32	McKinney	20% - <50%	>120%	185.2459
48	19124	085	0305.33	McKinney	20% - <50%	>120%	199.0862
48	19124	085	0305.34	McKinney	20% - <50%	>120%	155.1616
48	19124	085	0305.35	McKinney	20% - <50%	>120%	120.4846
48	19124	085	0305.36	McKinney	50% - <80%	>120%	162.6903
48	19124	085	0305.37	McKinney	50% - <80%	>120%	154.0746
48	19124	085	0305.38	McKinney	50% - <80%	>120%	153.9761
48	19124	085	0305.39	McKinney	20% - <50%	>120%	137.3617
48	19124	085	0305.40	McKinney	50% - <80%	50% - 80%	64.0389
48	19124	085	0305.41	McKinney	50% - <80%	>120%	167.0837
48	19124	085	0305.42	McKinney	50% - <80%	>120%	129.0505
48	19124	085	0305.43	McKinney	50% - <80%	N/A	0
48	19124	085	0305.44	McKinney	20% - <50%	>120%	135.1593
48	19124	085	0305.45	McKinney	20% - <50%	>120%	182.585
48	19124	085	0305.46	McKinney	20% - <50%	>120%	197.3266
48	19124	085	0305.47	McKinney	20% - <50%	>120%	187.9318
48	19124	085	0305.48	McKinney	20% - <50%	>120%	147.9284

State	MSA	County	Census Tract	Town	Minority Tract	Tract Income Catg	Percent Median
48	19124	085	0305.49	McKinney	20% - <50%	>120%	128.1175
48	19124	085	0305.50	McKinney	20% - <50%	>120%	130.467
48	19124	085	0306.04	McKinney	20% - <50%	>120%	128.8784
48	19124	085	0306.05	McKinney	50% - <80%	80% - 120%	94.2104
48	19124	085	0306.06	McKinney	20% - <50%	80% - 120%	102.0743
48	19124	085	0306.07	McKinney	20% - <50%	>120%	172.7158
48	19124	085	0306.08	McKinney	20% - <50%	>120%	123.0968
48	19124	085	0306.09	McKinney	20% - <50%	>120%	128.0733
48	19124	085	0307.01	McKinney	50% - <80%	80% - 120%	91.6469
48	19124	085	0307.02	McKinney	20% - <50%	80% - 120%	88.8942
48	19124	085	0308.01	McKinney	50% - <80%	50% - 80%	64.9051
48	19124	085	0308.02	McKinney	50% - <80%	50% - 80%	63.6924
48	19124	085	0309.01	McKinney	80% - 100%	N/A	0
48	19124	085	0309.02	McKinney	<10%	N/A	0
48	19124	085	0309.03	McKinney	50% - <80%	50% - 80%	64.784
48	19124	085	0310.03	Princeton	50% - <80%	80% - 120%	96.8533
48	19124	085	0310.05	Princeton	20% - <50%	80% - 120%	86.8697
48	19124	085	0310.06	Princeton	20% - <50%	80% - 120%	80.5355
48	19124	085	0310.07	Princeton	50% - <80%	80% - 120%	97.1307
48	19124	085	0310.08	Princeton	20% - <50%	50% - 80%	65.3988
48	19124	085	0311.01	Farmersville	20% - <50%	80% - 120%	100.3838
48	19124	085	0311.02	Farmersville	20% - <50%	80% - 120%	119.025
48	19124	085	0312.01	Nevada	20% - <50%	80% - 120%	115.6372
48	19124	085	0312.02	Nevada	20% - <50%	>120%	128.5059
48	19124	085	0313.08	Plano	20% - <50%	>120%	125.7521
48	19124	085	0313.14	Plano	20% - <50%	>120%	149.8443
48	19124	085	0313.18	Plano	20% - <50%	>120%	120.9737
48	19124	085	0313.19	Plano	50% - <80%	50% - 80%	75.8738
48	19124	085	0313.20	Plano	20% - <50%	>120%	121.4448
48	19124	085	0313.21	Plano	20% - <50%	>120%	145.974
48	19124	085	0313.22	Plano	20% - <50%	>120%	133.6126
48	19124	085	0313.23	Plano	20% - <50%	80% - 120%	119.889
48	19124	085	0313.24	Plano	20% - <50%	>120%	176.4988
48	19124	085	0313.25	Plano	20% - <50%	>120%	138.6197
48	19124	085	0313.26	Plano	20% - <50%	>120%	232.7384
48	19124	085	0313.27	Plano	20% - <50%	>120%	190.9279
48	19124	085	0313.28	Plano	50% - <80%	>120%	151.9334
48	19124	085	0313.29	Plano	50% - <80%	>120%	156.8793
48	19124	085	0313.30	Plano	20% - <50%	>120%	133.0045
48	19124	085	0313.31	Plano	50% - <80%	80% - 120%	104.7704
48	19124	085	0313.32	Plano	50% - <80%	80% - 120%	113.1517
48	19124	085	0313.33	Plano	50% - <80%	>120%	152.8619
48	19124	085	0313.34	Plano	20% - <50%	>120%	149.5759
48	19124	085	0313.35	Plano	20% - <50%	>120%	151.4465
48	19124	085	0313.36	Plano	20% - <50%	>120%	185.5822
48	19124	085	0314.08	Plano	20% - <50%	>120%	132.9173
48	19124	085	0314.11	Plano	50% - <80%	>120%	164.2574
48	19124	085	0314.12	Plano	20% - <50%	>120%	151.2506
48	19124	085	0314.13	Plano	50% - <80%	80% - 120%	115.3903
48	19124	085	0314.14	Plano	20% - <50%	>120%	148.8252
48	19124	085	0314.15	Plano	20% - <50%	>120%	200.0883
48	19124	085	0314.16	Plano	50% - <80%	>120%	210.3232
48	19124	085	0314.17	Plano	50% - <80%	>120%	240.8231
48	19124	085	0314.18	Plano	50% - <80%	>120%	212.444
48	19124	085	0314.19	Plano	20% - <50%	>120%	171.0456
48	19124	085	0314.20	Plano	10% - <20%	80% - 120%	117.7342
48	19124	085	0314.21	Plano	50% - <80%	>120%	152.3512

State	MSA	County	Census Tract	Town	Minority Tract	Tract Income Catg	Percent Median
48	19124	085	0314.22	Plano	20% - <50%	80% - 120%	115.2295
48	19124	085	0314.23	Plano	20% - <50%	80% - 120%	101.1153
48	19124	085	0314.24	Plano	20% - <50%	80% - 120%	113.8515
48	19124	085	0314.25	Plano	20% - <50%	>120%	126.9806
48	19124	085	0315.04	Plano	20% - <50%	80% - 120%	110.6459
48	19124	085	0315.07	Plano	20% - <50%	80% - 120%	114.7472
48	19124	085	0315.08	Plano	20% - <50%	80% - 120%	116.4524
48	19124	085	0315.09	Plano	50% - <80%	>120%	144.2857
48	19124	085	0315.10	Plano	20% - <50%	>120%	175.336
48	19124	085	0315.11	Plano	50% - <80%	50% - 80%	60.7088
48	19124	085	0315.12	Plano	50% - <80%	80% - 120%	96.2633
48	19124	085	0316.11	Plano	50% - <80%	80% - 120%	107.3452
48	19124	085	0316.13	Plano	20% - <50%	>120%	160.1279
48	19124	085	0316.21	Plano	20% - <50%	80% - 120%	95.362
48	19124	085	0316.22	Plano	20% - <50%	>120%	134.1085
48	19124	085	0316.23	Plano	50% - <80%	80% - 120%	94.4063
48	19124	085	0316.24	Plano	50% - <80%	50% - 80%	74.5433
48	19124	085	0316.25	Plano	20% - <50%	>120%	136.5713
48	19124	085	0316.26	Plano	20% - <50%	>120%	149.3879
48	19124	085	0316.27	Plano	20% - <50%	80% - 120%	93.0113
48	19124	085	0316.28	Plano	20% - <50%	80% - 120%	104.6741
48	19124	085	0316.29	Plano	20% - <50%	80% - 120%	97.5972
48	19124	085	0316.30	Plano	20% - <50%	80% - 120%	118.8507
48	19124	085	0316.31	Plano	50% - <80%	80% - 120%	118.4317
48	19124	085	0316.32	Plano	50% - <80%	80% - 120%	105.3218
48	19124	085	0316.33	Plano	20% - <50%	>120%	125.4543
48	19124	085	0316.34	Plano	20% - <50%	80% - 120%	89.1694
48	19124	085	0316.35	Plano	50% - <80%	80% - 120%	97.9074
48	19124	085	0316.36	Plano	20% - <50%	>120%	122.2691
48	19124	085	0316.39	Plano	50% - <80%	>120%	142.8296
48	19124	085	0316.41	Plano	50% - <80%	>120%	158.7997
48	19124	085	0316.42	Plano	20% - <50%	>120%	164.2631
48	19124	085	0316.43	Plano	20% - <50%	>120%	136.7242
48	19124	085	0316.45	Plano	20% - <50%	>120%	184.6436
48	19124	085	0316.46	Plano	20% - <50%	>120%	246.3522
48	19124	085	0316.47	Plano	20% - <50%	>120%	161.9305
48	19124	085	0316.49	Plano	20% - <50%	>120%	163.5248
48	19124	085	0316.54	Plano	20% - <50%	>120%	184.4103
48	19124	085	0316.55	Plano	20% - <50%	>120%	120.8832
48	19124	085	0316.57	Plano	50% - <80%	80% - 120%	107.7189
48	19124	085	0316.59	Plano	50% - <80%	80% - 120%	119.478
48	19124	085	0316.60	Plano	80% - 100%	>120%	122.2951
48	19124	085	0316.61	Plano	50% - <80%	>120%	167.8016
48	19124	085	0316.62	Plano	50% - <80%	>120%	154.8083
48	19124	085	0316.63	Plano	50% - <80%	>120%	167.2388
48	19124	085	0316.64	Plano	20% - <50%	>120%	187.4551
48	19124	085	0316.65	Plano	50% - <80%	80% - 120%	86.5277
48	19124	085	0316.66	Plano	50% - <80%	>120%	159.7214
48	19124	085	0316.67	Plano	20% - <50%	>120%	193.4597
48	19124	085	0316.68	Plano	20% - <50%	>120%	283.0787
48	19124	085	0316.69	Plano	50% - <80%	>120%	170.2938
48	19124	085	0316.70	Plano	20% - <50%	N/A	0
48	19124	085	0316.71	Plano	50% - <80%	80% - 120%	102.8987
48	19124	085	0316.72	Plano	50% - <80%	80% - 120%	116.6947
48	19124	085	0316.73	Plano	50% - <80%	80% - 120%	101.9622
48	19124	085	0316.74	Plano	50% - <80%	>120%	129.8295
48	19124	085	0316.75	Plano	50% - <80%	>120%	143.2282

State	MSA	County	Census Tract	Town	Minority Tract	Tract Income Catg	Percent Median
48	19124	085	0316.76	Plano	20% - <50%	>120%	132.1032
48	19124	085	0316.77	Plano	50% - <80%	>120%	195.5805
48	19124	085	0316.78	Plano	20% - <50%	>120%	170.2666
48	19124	085	0316.79	Plano	50% - <80%	>120%	188.9327
48	19124	085	0316.80	Plano	50% - <80%	>120%	279.4508
48	19124	085	0316.81	Plano	20% - <50%	>120%	128.4742
48	19124	085	0316.82	Plano	20% - <50%	>120%	135.5737
48	19124	085	0317.04	Plano	20% - <50%	>120%	173.5424
48	19124	085	0317.06	Plano	20% - <50%	>120%	258.8586
48	19124	085	0317.08	Plano	20% - <50%	80% - 120%	119.7418
48	19124	085	0317.09	Plano	50% - <80%	80% - 120%	119.9354
48	19124	085	0317.11	Plano	20% - <50%	>120%	128.2341
48	19124	085	0317.13	Plano	50% - <80%	80% - 120%	102.6065
48	19124	085	0317.15	Plano	20% - <50%	>120%	188.8863
48	19124	085	0317.16	Plano	20% - <50%	>120%	135.4345
48	19124	085	0317.17	Plano	50% - <80%	>120%	130.2157
48	19124	085	0317.18	Plano	20% - <50%	>120%	168.9973
48	19124	085	0317.19	Plano	20% - <50%	>120%	157.4228
48	19124	085	0317.20	Plano	80% - 100%	<50%	44.3141
48	19124	085	0317.21	Plano	20% - <50%	>120%	122.4503
48	19124	085	0317.22	Plano	50% - <80%	80% - 120%	83.2882
48	19124	085	0317.23	Plano	50% - <80%	<50%	43.877
48	19124	085	0317.24	Plano	50% - <80%	50% - 80%	68.3202
48	19124	085	0318.06	Plano	50% - <80%	80% - 120%	84.2529
48	19124	085	0318.07	Plano	20% - <50%	80% - 120%	104.5213
48	19124	085	0318.08	Plano	20% - <50%	80% - 120%	118.0841
48	19124	085	0318.09	Plano	50% - <80%	50% - 80%	62.7198
48	19124	085	0318.10	Plano	50% - <80%	>120%	125.1882
48	19124	085	0318.11	Plano	50% - <80%	80% - 120%	108.2398
48	19124	085	0318.12	Plano	20% - <50%	80% - 120%	114.1017
48	19124	085	0318.13	Plano	50% - <80%	N/A	0
48	19124	085	0318.14	Plano	20% - <50%	>120%	149.2781
48	19124	085	0318.15	Plano	20% - <50%	>120%	158.8167
48	19124	085	0318.16	Plano	20% - <50%	80% - 120%	118.4883
48	19124	085	0319.01	Plano	50% - <80%	50% - 80%	72.2799
48	19124	085	0319.02	Plano	50% - <80%	50% - 80%	73.7768
48	19124	085	0319.03	Plano	50% - <80%	>120%	123.7921
48	19124	085	0319.04	Plano	50% - <80%	>120%	122.9813
48	19124	085	0320.03	Plano	50% - <80%	50% - 80%	66.6523
48	19124	085	0320.08	Plano	50% - <80%	80% - 120%	108.2318
48	19124	085	0320.10	Plano	50% - <80%	50% - 80%	76.6879
48	19124	085	0320.12	Plano	50% - <80%	50% - 80%	56.9925
48	19124	085	0320.13	Plano	50% - <80%	50% - 80%	69.748
48	19124	085	0320.14	Plano	50% - <80%	50% - 80%	68.4889
48	19124	085	0320.15	Plano	50% - <80%	80% - 120%	80.368
48	19124	085	0320.16	Plano	50% - <80%	>120%	152.3467
48	19124	085	0320.17	Plano	50% - <80%	80% - 120%	112.8936
48	19124	085	0320.18	Plano	20% - <50%	>120%	138.64
48	19124	085	0320.19	Plano	50% - <80%	>120%	238.3638
48	19124	113	0001.00	Northeast	20% - <50%	>120%	212.6626
48	19124	113	0002.01	Northeast	10% - <20%	>120%	283.0787
48	19124	113	0002.02	Northeast	20% - <50%	>120%	205.6445
48	19124	113	0003.00	Northeast	20% - <50%	N/A	0
48	19124	113	0004.01	Northeast	50% - <80%	50% - 80%	62.6779
48	19124	113	0004.05	Northeast	50% - <80%	<50%	41.2036
48	19124	113	0004.07	Northeast	50% - <80%	50% - 80%	57.5677
48	19124	113	0004.08	Northeast	20% - <50%	80% - 120%	106.2152

State	MSA	County	Census Tract	Town	Minority Tract	Tract Income Catg	Percent Median
48	19124	113	0004.09	Northeast	50% - <80%	50% - 80%	79.7769
48	19124	113	0004.10	Northeast	80% - 100%	50% - 80%	63.3833
48	19124	113	0005.01	Northeast	20% - <50%	N/A	0
48	19124	113	0005.02	Northeast	20% - <50%	>120%	167.7778
48	19124	113	0005.03	Northeast	20% - <50%	>120%	143.0957
48	19124	113	0006.05	Northeast	20% - <50%	>120%	143.4093
48	19124	113	0006.06	Northeast	10% - <20%	>120%	258.5438
48	19124	113	0006.07	Northeast	20% - <50%	>120%	166.898
48	19124	113	0006.08	Northeast	20% - <50%	>120%	167.3894
48	19124	113	0006.09	Northeast	20% - <50%	>120%	126.5017
48	19124	113	0006.10	Northeast	80% - 100%	50% - 80%	63.6188
48	19124	113	0006.11	Northeast	50% - <80%	N/A	0
48	19124	113	0007.03	Northeast	20% - <50%	>120%	178.4102
48	19124	113	0007.04	Northeast	20% - <50%	>120%	266.6591
48	19124	113	0007.05	Northeast	20% - <50%	>120%	198.708
48	19124	113	0007.06	Northeast	10% - <20%	>120%	195.9769
48	19124	113	0008.01	Northeast	50% - <80%	50% - 80%	56.5045
48	19124	113	0008.02	Northeast	50% - <80%	50% - 80%	68.7006
48	19124	113	0009.01	Northeast	20% - <50%	>120%	148.3587
48	19124	113	0009.02	Northeast	20% - <50%	N/A	0
48	19124	113	0010.01	Northeast	20% - <50%	>120%	231.3378
48	19124	113	0010.02	Northeast	20% - <50%	>120%	142.9541
48	19124	113	0011.01	Northeast	20% - <50%	>120%	219.3851
48	19124	113	0011.02	Northeast	20% - <50%	>120%	283.0787
48	19124	113	0012.02	Northeast	50% - <80%	80% - 120%	82.234
48	19124	113	0012.03	Northeast	50% - <80%	>120%	137.5757
48	19124	113	0012.04	Northeast	80% - 100%	50% - 80%	60.3997
48	19124	113	0013.01	Northeast	20% - <50%	>120%	129.9167
48	19124	113	0013.02	Northeast	50% - <80%	80% - 120%	102.4231
48	19124	113	0014.00	Northeast	50% - <80%	50% - 80%	69.611
48	19124	113	0015.02	Northeast	50% - <80%	50% - 80%	52.1836
48	19124	113	0015.03	Northeast	50% - <80%	<50%	46.1246
48	19124	113	0015.04	Northeast	50% - <80%	50% - 80%	62.0925
48	19124	113	0016.01	Northeast	50% - <80%	N/A	0
48	19124	113	0016.02	Northeast	20% - <50%	>120%	132.2742
48	19124	113	0017.03	Northeast	20% - <50%	>120%	181.6622
48	19124	113	0017.05	Northeast	20% - <50%	>120%	230.236
48	19124	113	0018.01	Northeast	20% - <50%	N/A	0
48	19124	113	0018.02	Northeast	20% - <50%	80% - 120%	119.6478
48	19124	113	0019.01	Northeast	20% - <50%	>120%	160.7846
48	19124	113	0019.02	Northeast	20% - <50%	>120%	164.9402
48	19124	113	0020.01	Southwest	50% - <80%	80% - 120%	94.6169
48	19124	113	0020.02	Southwest	80% - 100%	<50%	32.9581
48	19124	113	0021.00	Northeast	50% - <80%	>120%	149.7956
48	19124	113	0022.00	Northeast	50% - <80%	80% - 120%	99.7622
48	19124	113	0024.00	Northeast	80% - 100%	50% - 80%	65.0467
48	19124	113	0025.00	Northeast	80% - 100%	50% - 80%	57.7478
48	19124	113	0027.03	Northeast	80% - 100%	<50%	49.0867
48	19124	113	0031.02	Northeast	20% - <50%	>120%	129.5555
48	19124	113	0031.03	Northeast	50% - <80%	>120%	123.8464
48	19124	113	0037.00	Northeast	80% - 100%	<50%	39.0567
48	19124	113	0042.01	Southwest	50% - <80%	80% - 120%	111.4295
48	19124	113	0042.02	Southwest	50% - <80%	>120%	136.8884
48	19124	113	0043.00	Southwest	50% - <80%	50% - 80%	64.8179
48	19124	113	0044.00	Southwest	20% - <50%	>120%	154.5128
48	19124	113	0045.00	Southwest	80% - 100%	50% - 80%	55.3416
48	19124	113	0046.00	Southwest	20% - <50%	>120%	128.3281

State	MSA	County	Census Tract	Town	Minority Tract	Tract Income Catg	Percent Median
48	19124	113	0047.00	Southwest	80% - 100%	50% - 80%	69.0097
48	19124	113	0048.00	Southwest	80% - 100%	50% - 80%	53.4212
48	19124	113	0050.00	Southwest	80% - 100%	50% - 80%	55.5013
48	19124	113	0051.00	Southwest	80% - 100%	50% - 80%	60.4325
48	19124	113	0052.00	Southwest	80% - 100%	80% - 120%	93.9308
48	19124	113	0053.00	Southwest	80% - 100%	50% - 80%	54.0293
48	19124	113	0054.00	Southwest	80% - 100%	<50%	49.9518
48	19124	113	0055.00	Southwest	80% - 100%	50% - 80%	62.3257
48	19124	113	0056.00	Southwest	80% - 100%	50% - 80%	54.737
48	19124	113	0057.00	Southwest	80% - 100%	<50%	39.5244
48	19124	113	0059.01	Southwest	80% - 100%	<50%	48.43
48	19124	113	0059.02	Southwest	80% - 100%	<50%	41.1832
48	19124	113	0060.01	Southwest	80% - 100%	50% - 80%	56.3415
48	19124	113	0060.02	Southwest	80% - 100%	<50%	40.4993
48	19124	113	0061.00	Southwest	80% - 100%	50% - 80%	51.2914
48	19124	113	0062.00	Southwest	80% - 100%	50% - 80%	64.9855
48	19124	113	0063.01	Southwest	80% - 100%	50% - 80%	72.8381
48	19124	113	0063.02	Southwest	80% - 100%	50% - 80%	74.2489
48	19124	113	0064.01	Southwest	80% - 100%	50% - 80%	73.3171
48	19124	113	0064.02	Southwest	80% - 100%	50% - 80%	51.8971
48	19124	113	0065.01	Southwest	80% - 100%	50% - 80%	71.9492
48	19124	113	0065.02	Southwest	80% - 100%	50% - 80%	73.4869
48	19124	113	0067.01	Southwest	80% - 100%	50% - 80%	51.5008
48	19124	113	0067.02	Southwest	80% - 100%	50% - 80%	52.23
48	19124	113	0068.00	Southwest	80% - 100%	50% - 80%	59.521
48	19124	113	0069.00	Southwest	80% - 100%	50% - 80%	64.1872
48	19124	113	0071.01	Northeast	10% - <20%	>120%	193.625
48	19124	113	0071.02	Northeast	50% - <80%	50% - 80%	71.0841
48	19124	113	0072.03	Northeast	80% - 100%	<50%	45.9752
48	19124	113	0072.04	Northeast	80% - 100%	<50%	39.7554
48	19124	113	0072.05	Northeast	80% - 100%	<50%	39.5266
48	19124	113	0072.06	Northeast	80% - 100%	<50%	29.2509
48	19124	113	0073.01	Northeast	<10%	>120%	283.0787
48	19124	113	0073.02	Northeast	20% - <50%	>120%	214.9363
48	19124	113	0076.01	Northeast	20% - <50%	>120%	190.3696
48	19124	113	0076.04	Northeast	20% - <50%	>120%	283.0787
48	19124	113	0076.05	Northeast	10% - <20%	>120%	279.9637
48	19124	113	0077.01	Northeast	10% - <20%	>120%	283.0787
48	19124	113	0077.02	Northeast	10% - <20%	>120%	174.4188
48	19124	113	0078.01	Northeast	10% - <20%	>120%	135.3156
48	19124	113	0078.05	Northeast	50% - <80%	80% - 120%	91.057
48	19124	113	0078.09	Northeast	20% - <50%	80% - 120%	87.9929
48	19124	113	0078.10	Northeast	50% - <80%	>120%	122.6665
48	19124	113	0078.12	Northeast	10% - <20%	>120%	231.699
48	19124	113	0078.15	Northeast	80% - 100%	<50%	40.9081
48	19124	113	0078.19	Northeast	50% - <80%	<50%	33.8855
48	19124	113	0078.21	Northeast	80% - 100%	<50%	46.2775
48	19124	113	0078.22	Northeast	20% - <50%	80% - 120%	98.5019
48	19124	113	0078.23	Northeast	50% - <80%	50% - 80%	62.5918
48	19124	113	0078.24	Northeast	10% - <20%	>120%	204.6243
48	19124	113	0078.25	Northeast	50% - <80%	80% - 120%	82.5929
48	19124	113	0078.26	Northeast	50% - <80%	80% - 120%	99.0771
48	19124	113	0078.27	Northeast	50% - <80%	<50%	44.622
48	19124	113	0078.28	Northeast	80% - 100%	50% - 80%	52.3772
48	19124	113	0078.29	Northeast	80% - 100%	50% - 80%	54.2093
48	19124	113	0078.30	Northeast	80% - 100%	<50%	35.4843
48	19124	113	0078.31	Northeast	80% - 100%	50% - 80%	51.3672

State	MSA	County	Census Tract	Town	Minority Tract	Tract Income Catg	Percent Median
48	19124	113	0078.32	Northeast	80% - 100%	<50%	35.6677
48	19124	113	0078.33	Northeast	80% - 100%	<50%	39.6716
48	19124	113	0078.34	Northeast	80% - 100%	<50%	48.8082
48	19124	113	0078.35	Northeast	50% - <80%	<50%	48.293
48	19124	113	0079.02	Northeast	20% - <50%	>120%	163.0798
48	19124	113	0079.03	Northeast	20% - <50%	>120%	172.5244
48	19124	113	0079.06	Northeast	10% - <20%	>120%	283.0787
48	19124	113	0079.09	Northeast	50% - <80%	80% - 120%	97.1431
48	19124	113	0079.10	Northeast	50% - <80%	>120%	128.2001
48	19124	113	0079.12	Northeast	20% - <50%	>120%	124.0819
48	19124	113	0079.13	Northeast	20% - <50%	>120%	149.705
48	19124	113	0079.14	Northeast	20% - <50%	80% - 120%	119.5583
48	19124	113	0079.15	Northeast	20% - <50%	N/A	0
48	19124	113	0079.16	Northeast	20% - <50%	>120%	179.4927
48	19124	113	0080.00	Northeast	10% - <20%	>120%	283.0787
48	19124	113	0081.01	Northeast	20% - <50%	80% - 120%	103.1919
48	19124	113	0081.02	Northeast	10% - <20%	>120%	201.6928
48	19124	113	0082.00	Northeast	20% - <50%	80% - 120%	97.8191
48	19124	113	0084.01	Northeast	80% - 100%	50% - 80%	54.3803
48	19124	113	0084.02	Northeast	80% - 100%	50% - 80%	60.7099
48	19124	113	0085.00	Northeast	80% - 100%	50% - 80%	62.0121
48	19124	113	0086.04	Southwest	80% - 100%	<50%	37.4364
48	19124	113	0087.01	Southwest	80% - 100%	<50%	33.5514
48	19124	113	0087.03	Southwest	80% - 100%	<50%	36.1603
48	19124	113	0087.04	Southwest	80% - 100%	<50%	24.8859
48	19124	113	0087.05	Southwest	80% - 100%	50% - 80%	53.9545
48	19124	113	0088.01	Southwest	80% - 100%	<50%	43.0345
48	19124	113	0088.02	Southwest	80% - 100%	<50%	44.8632
48	19124	113	0090.01	Northeast	80% - 100%	50% - 80%	57.3979
48	19124	113	0090.02	Northeast	80% - 100%	<50%	46.6727
48	19124	113	0091.01	Northeast	80% - 100%	50% - 80%	71.6695
48	19124	113	0091.03	Northeast	80% - 100%	<50%	41.2036
48	19124	113	0091.04	Northeast	80% - 100%	50% - 80%	79.8278
48	19124	113	0091.05	Northeast	80% - 100%	50% - 80%	55.1571
48	19124	113	0092.02	Northeast	80% - 100%	<50%	45.8189
48	19124	113	0092.03	Northeast	80% - 100%	50% - 80%	60.206
48	19124	113	0092.04	Northeast	80% - 100%	<50%	40.9024
48	19124	113	0093.01	Northeast	80% - 100%	50% - 80%	51.1566
48	19124	113	0093.03	Northeast	80% - 100%	<50%	47.3271
48	19124	113	0093.04	Northeast	80% - 100%	<50%	29.5725
48	19124	113	0094.01	Northeast	50% - <80%	80% - 120%	96.8589
48	19124	113	0094.02	Northeast	20% - <50%	>120%	198.794
48	19124	113	0095.00	Northeast	20% - <50%	>120%	228.4436
48	19124	113	0096.03	Northeast	20% - <50%	>120%	199.9739
48	19124	113	0096.04	Northeast	50% - <80%	80% - 120%	88.7561
48	19124	113	0096.05	Northeast	80% - 100%	50% - 80%	74.754
48	19124	113	0096.07	Northeast	20% - <50%	>120%	140.9318
48	19124	113	0096.08	Northeast	20% - <50%	>120%	129.9326
48	19124	113	0096.09	Northeast	20% - <50%	>120%	195.8387
48	19124	113	0096.10	Northeast	80% - 100%	50% - 80%	51.2415
48	19124	113	0096.11	Northeast	50% - <80%	80% - 120%	108.7822
48	19124	113	0097.01	Northeast	50% - <80%	80% - 120%	80.1109
48	19124	113	0097.02	Northeast	20% - <50%	>120%	171.6322
48	19124	113	0098.02	Northeast	80% - 100%	50% - 80%	56.5328
48	19124	113	0098.03	Northeast	80% - 100%	50% - 80%	76.3335
48	19124	113	0098.04	Northeast	80% - 100%	<50%	44.0921
48	19124	113	0099.00	Northeast	50% - <80%	80% - 120%	83.9732

State	MSA	County	Census Tract	Town	Minority Tract	Tract Income Catg	Percent Median
48	19124	113	0100.01	Northeast	80% - 100%	<50%	41.7279
48	19124	113	0100.02	Northeast	50% - <80%	N/A	0
48	19124	113	0100.03	Northeast	20% - <50%	>120%	163.0844
48	19124	113	0101.01	Southwest	80% - 100%	<50%	49.1524
48	19124	113	0101.02	Southwest	80% - 100%	50% - 80%	53.3488
48	19124	113	0105.00	Southwest	80% - 100%	50% - 80%	50.5293
48	19124	113	0106.01	Southwest	80% - 100%	50% - 80%	70.0617
48	19124	113	0106.02	Southwest	80% - 100%	<50%	48.5953
48	19124	113	0107.01	Southwest	80% - 100%	<50%	46.0261
48	19124	113	0107.04	Southwest	80% - 100%	<50%	40.574
48	19124	113	0108.04	Southwest	80% - 100%	<50%	43.2904
48	19124	113	0108.05	Southwest	80% - 100%	50% - 80%	60.9511
48	19124	113	0108.06	Southwest	50% - <80%	80% - 120%	109.2373
48	19124	113	0108.07	Southwest	80% - 100%	50% - 80%	66.051
48	19124	113	0108.08	Southwest	80% - 100%	<50%	41.6633
48	19124	113	0108.09	Southwest	80% - 100%	<50%	47.2071
48	19124	113	0109.03	Southwest	80% - 100%	<50%	45.4566
48	19124	113	0109.04	Southwest	80% - 100%	<50%	38.4691
48	19124	113	0109.05	Southwest	80% - 100%	<50%	35.0314
48	19124	113	0109.06	Southwest	80% - 100%	50% - 80%	58.5732
48	19124	113	0110.02	Southwest	80% - 100%	50% - 80%	63.3063
48	19124	113	0110.03	Southwest	80% - 100%	50% - 80%	77.758
48	19124	113	0110.04	Southwest	80% - 100%	50% - 80%	51.237
48	19124	113	0111.01	Southwest	80% - 100%	50% - 80%	79.0952
48	19124	113	0111.03	Southwest	80% - 100%	<50%	48.2545
48	19124	113	0111.04	Southwest	80% - 100%	<50%	39.0103
48	19124	113	0111.05	Southwest	80% - 100%	<50%	49.8352
48	19124	113	0112.01	Southwest	80% - 100%	50% - 80%	60.1585
48	19124	113	0112.02	Southwest	80% - 100%	50% - 80%	70.552
48	19124	113	0113.00	Southwest	80% - 100%	50% - 80%	60.2717
48	19124	113	0114.01	Southwest	80% - 100%	<50%	38.5279
48	19124	113	0115.00	Northeast	80% - 100%	<50%	27.7857
48	19124	113	0116.01	Northeast	80% - 100%	<50%	42.7684
48	19124	113	0116.03	Northeast	80% - 100%	50% - 80%	63.4241
48	19124	113	0116.04	Northeast	80% - 100%	50% - 80%	67.275
48	19124	113	0117.01	Northeast	80% - 100%	<50%	47.6238
48	19124	113	0117.02	Northeast	80% - 100%	50% - 80%	64.5983
48	19124	113	0118.01	Northeast	80% - 100%	<50%	46.2412
48	19124	113	0118.02	Northeast	80% - 100%	50% - 80%	58.7295
48	19124	113	0119.01	Northeast	80% - 100%	50% - 80%	55.773
48	19124	113	0119.02	Northeast	80% - 100%	50% - 80%	59.2458
48	19124	113	0120.00	Northeast	80% - 100%	<50%	43.9279
48	19124	113	0121.01	Northeast	80% - 100%	<50%	37.7625
48	19124	113	0121.02	Northeast	80% - 100%	50% - 80%	50.2462
48	19124	113	0122.06	Northeast	50% - <80%	80% - 120%	89.1694
48	19124	113	0122.07	Northeast	80% - 100%	50% - 80%	51.7647
48	19124	113	0122.08	Northeast	80% - 100%	<50%	33.1914
48	19124	113	0122.09	Northeast	20% - <50%	80% - 120%	98.7238
48	19124	113	0122.10	Northeast	80% - 100%	50% - 80%	62.277
48	19124	113	0122.11	Northeast	80% - 100%	<50%	40.0124
48	19124	113	0122.12	Northeast	50% - <80%	50% - 80%	65.7849
48	19124	113	0122.13	Northeast	20% - <50%	80% - 120%	104.9685
48	19124	113	0123.01	Northeast	80% - 100%	50% - 80%	76.9676
48	19124	113	0123.02	Northeast	80% - 100%	<50%	40.0758
48	19124	113	0124.00	Northeast	20% - <50%	50% - 80%	66.6308
48	19124	113	0125.01	Northeast	50% - <80%	50% - 80%	77.4534
48	19124	113	0125.02	Northeast	80% - 100%	<50%	46.8821

State	MSA	County	Census Tract	Town	Minority Tract	Tract Income Catg	Percent Median
48	19124	113	0126.01	Northeast	80% - 100%	50% - 80%	52.2968
48	19124	113	0126.03	Northeast	50% - <80%	80% - 120%	98.109
48	19124	113	0126.04	Northeast	80% - 100%	<50%	49.2747
48	19124	113	0127.01	Northeast	80% - 100%	50% - 80%	55.0959
48	19124	113	0127.02	Northeast	50% - <80%	50% - 80%	55.9078
48	19124	113	0128.01	Northeast	20% - <50%	50% - 80%	78.3819
48	19124	113	0128.02	Northeast	50% - <80%	80% - 120%	103.6381
48	19124	113	0129.00	Northeast	20% - <50%	>120%	124.3027
48	19124	113	0130.05	Northeast	10% - <20%	>120%	155.6926
48	19124	113	0130.07	Northeast	50% - <80%	80% - 120%	98.3151
48	19124	113	0130.08	Northeast	20% - <50%	>120%	151.28
48	19124	113	0130.09	Northeast	50% - <80%	>120%	125.0852
48	19124	113	0130.10	Northeast	80% - 100%	<50%	42.628
48	19124	113	0130.11	Northeast	80% - 100%	<50%	41.1526
48	19124	113	0130.12	Northeast	20% - <50%	>120%	184.1012
48	19124	113	0130.13	Northeast	10% - <20%	>120%	231.1555
48	19124	113	0131.01	Northeast	10% - <20%	>120%	234.1708
48	19124	113	0131.02	Northeast	10% - <20%	>120%	266.0929
48	19124	113	0131.04	Northeast	20% - <50%	>120%	229.9756
48	19124	113	0131.06	Northeast	20% - <50%	80% - 120%	91.6707
48	19124	113	0131.07	Northeast	50% - <80%	<50%	49.6767
48	19124	113	0132.01	Northeast	20% - <50%	>120%	192.0568
48	19124	113	0132.02	Northeast	20% - <50%	80% - 120%	100.6012
48	19124	113	0133.00	Northeast	10% - <20%	>120%	283.0787
48	19124	113	0134.00	Northeast	10% - <20%	>120%	256.9269
48	19124	113	0135.00	Northeast	10% - <20%	>120%	283.0787
48	19124	113	0136.05	Northeast	20% - <50%	>120%	160.48
48	19124	113	0136.06	Northeast	20% - <50%	80% - 120%	109.4242
48	19124	113	0136.07	Northeast	20% - <50%	>120%	169.4423
48	19124	113	0136.08	Northeast	10% - <20%	>120%	182.2702
48	19124	113	0136.09	Northeast	50% - <80%	80% - 120%	85.6049
48	19124	113	0136.10	Northeast	50% - <80%	>120%	140.223
48	19124	113	0136.11	Northeast	20% - <50%	>120%	171.4193
48	19124	113	0136.15	Northeast	80% - 100%	<50%	49.8216
48	19124	113	0136.17	Northeast	20% - <50%	>120%	177.5134
48	19124	113	0136.18	Northeast	20% - <50%	>120%	136.9778
48	19124	113	0136.19	Northeast	20% - <50%	>120%	173.3329
48	19124	113	0136.20	Northeast	20% - <50%	80% - 120%	85.2188
48	19124	113	0136.21	Northeast	50% - <80%	50% - 80%	73.5288
48	19124	113	0136.22	Northeast	50% - <80%	>120%	124.8983
48	19124	113	0136.24	Northeast	50% - <80%	80% - 120%	90.6731
48	19124	113	0136.25	Northeast	80% - 100%	50% - 80%	57.9256
48	19124	113	0136.26	Northeast	50% - <80%	50% - 80%	59.0103
48	19124	113	0136.27	Northeast	50% - <80%	50% - 80%	67.4483
48	19124	113	0136.28	Northeast	50% - <80%	80% - 120%	112.2878
48	19124	113	0136.29	Northeast	50% - <80%	<50%	36.517
48	19124	113	0136.30	Northeast	50% - <80%	50% - 80%	71.93
48	19124	113	0136.31	Northeast	80% - 100%	50% - 80%	52.1395
48	19124	113	0137.15	Northeast	80% - 100%	80% - 120%	96.9223
48	19124	113	0137.16	Northeast	50% - <80%	80% - 120%	101.5546
48	19124	113	0137.17	Northeast	80% - 100%	50% - 80%	66.3737
48	19124	113	0137.18	Northeast	80% - 100%	50% - 80%	64.9346
48	19124	113	0137.19	Northeast	50% - <80%	80% - 120%	86.8108
48	19124	113	0137.20	Northeast	50% - <80%	80% - 120%	88.2568
48	19124	113	0137.21	Northeast	20% - <50%	>120%	147.2886
48	19124	113	0137.22	Northeast	50% - <80%	80% - 120%	92.923
48	19124	113	0137.25	Northeast	50% - <80%	50% - 80%	60.3249

State	MSA	County	Census Tract	Town	Minority Tract	Tract Income Catg	Percent Median
48	19124	113	0137.26	Northeast	50% - <80%	80% - 120%	111.0468
48	19124	113	0137.27	Northeast	50% - <80%	80% - 120%	97.1896
48	19124	113	0137.28	Northeast	80% - 100%	50% - 80%	59.2538
48	19124	113	0137.29	Northeast	80% - 100%	50% - 80%	67.2694
48	19124	113	0138.04	Northeast	50% - <80%	80% - 120%	98.7238
48	19124	113	0138.05	Northeast	50% - <80%	50% - 80%	76.8351
48	19124	113	0138.06	Northeast	50% - <80%	80% - 120%	118.3773
48	19124	113	0138.07	Northeast	50% - <80%	80% - 120%	114.4086
48	19124	113	0138.08	Northeast	20% - <50%	>120%	129.6325
48	19124	113	0139.01	Northeast	80% - 100%	50% - 80%	68.045
48	19124	113	0139.02	Northeast	50% - <80%	80% - 120%	97.142
48	19124	113	0140.01	Northeast	50% - <80%	80% - 120%	107.4404
48	19124	113	0140.02	Northeast	50% - <80%	>120%	210.0435
48	19124	113	0141.19	Southwest	20% - <50%	>120%	146.1892
48	19124	113	0141.20	Southwest	20% - <50%	>120%	178.8541
48	19124	113	0141.21	Southwest	50% - <80%	80% - 120%	104.4714
48	19124	113	0141.23	Southwest	20% - <50%	>120%	194.1108
48	19124	113	0141.24	Southwest	50% - <80%	>120%	202.636
48	19124	113	0141.26	Southwest	50% - <80%	>120%	185.0161
48	19124	113	0141.28	Southwest	50% - <80%	>120%	131.6922
48	19124	113	0141.30	Southwest	50% - <80%	80% - 120%	111.4295
48	19124	113	0141.32	Southwest	50% - <80%	80% - 120%	81.2161
48	19124	113	0141.34	Southwest	50% - <80%	>120%	175.6575
48	19124	113	0141.35	Southwest	50% - <80%	>120%	133.6533
48	19124	113	0141.38	Southwest	50% - <80%	>120%	131.4227
48	19124	113	0141.39	Southwest	80% - 100%	80% - 120%	90.4987
48	19124	113	0141.40	Southwest	80% - 100%	50% - 80%	64.6798
48	19124	113	0141.41	Southwest	50% - <80%	80% - 120%	93.0895
48	19124	113	0141.42	Southwest	50% - <80%	N/A	0
48	19124	113	0141.43	Southwest	50% - <80%	>120%	145.8936
48	19124	113	0141.44	Southwest	50% - <80%	80% - 120%	95.4062
48	19124	113	0141.45	Southwest	80% - 100%	50% - 80%	63.475
48	19124	113	0141.46	Southwest	80% - 100%	50% - 80%	57.8803
48	19124	113	0141.47	Southwest	80% - 100%	<50%	45.4237
48	19124	113	0141.48	Southwest	80% - 100%	80% - 120%	88.5863
48	19124	113	0141.49	Southwest	80% - 100%	>120%	138.9107
48	19124	113	0141.50	Southwest	80% - 100%	>120%	137.1941
48	19124	113	0141.51	Southwest	80% - 100%	>120%	125.88
48	19124	113	0141.52	Southwest	80% - 100%	80% - 120%	92.9434
48	19124	113	0141.53	Southwest	50% - <80%	50% - 80%	50.6471
48	19124	113	0141.54	Southwest	80% - 100%	80% - 120%	103.3233
48	19124	113	0141.55	Southwest	80% - 100%	>120%	136.1308
48	19124	113	0141.56	Southwest	80% - 100%	>120%	168.7244
48	19124	113	0141.57	Southwest	50% - <80%	80% - 120%	95.3971
48	19124	113	0141.58	Southwest	80% - 100%	50% - 80%	50.8305
48	19124	113	0141.59	Southwest	80% - 100%	>120%	197.8848
48	19124	113	0141.60	Southwest	50% - <80%	50% - 80%	76.3924
48	19124	113	0141.61	Southwest	80% - 100%	50% - 80%	52.8834
48	19124	113	0142.03	Southwest	50% - <80%	80% - 120%	84.5043
48	19124	113	0142.04	Southwest	50% - <80%	50% - 80%	53.6669
48	19124	113	0142.05	Southwest	20% - <50%	>120%	159.6557
48	19124	113	0142.07	Southwest	50% - <80%	>120%	183.0934
48	19124	113	0142.08	Southwest	50% - <80%	80% - 120%	81.0315
48	19124	113	0142.09	Southwest	50% - <80%	>120%	131.8949
48	19124	113	0143.06	Southwest	80% - 100%	50% - 80%	71.9198
48	19124	113	0143.08	Southwest	80% - 100%	50% - 80%	53.2706
48	19124	113	0143.09	Southwest	80% - 100%	<50%	47.3928

State	MSA	County	Census Tract	Town	Minority Tract	Tract Income Catg	Percent Median
48	19124	113	0143.10	Southwest	50% - <80%	80% - 120%	87.9397
48	19124	113	0143.13	Southwest	50% - <80%	80% - 120%	99.0409
48	19124	113	0143.14	Southwest	50% - <80%	>120%	120.6873
48	19124	113	0143.15	Southwest	50% - <80%	50% - 80%	79.0386
48	19124	113	0143.16	Southwest	50% - <80%	50% - 80%	69.7865
48	19124	113	0143.17	Southwest	50% - <80%	80% - 120%	99.3828
48	19124	113	0143.18	Southwest	50% - <80%	80% - 120%	101.7448
48	19124	113	0143.19	Southwest	80% - 100%	50% - 80%	66.6806
48	19124	113	0143.20	Southwest	80% - 100%	80% - 120%	117.1533
48	19124	113	0144.05	Southwest	80% - 100%	50% - 80%	59.7769
48	19124	113	0144.06	Southwest	50% - <80%	50% - 80%	68.2579
48	19124	113	0144.07	Southwest	80% - 100%	50% - 80%	55.2714
48	19124	113	0144.08	Southwest	50% - <80%	50% - 80%	67.1131
48	19124	113	0144.09	Southwest	80% - 100%	<50%	46.5311
48	19124	113	0144.10	Southwest	80% - 100%	50% - 80%	58.0309
48	19124	113	0145.01	Southwest	50% - <80%	80% - 120%	114.8559
48	19124	113	0145.02	Southwest	50% - <80%	50% - 80%	62.568
48	19124	113	0146.01	Southwest	50% - <80%	50% - 80%	60.6329
48	19124	113	0146.02	Southwest	80% - 100%	50% - 80%	62.867
48	19124	113	0146.03	Southwest	80% - 100%	50% - 80%	63.4093
48	19124	113	0147.01	Southwest	80% - 100%	50% - 80%	56.5045
48	19124	113	0147.04	Southwest	80% - 100%	50% - 80%	51.7986
48	19124	113	0149.03	Southwest	80% - 100%	50% - 80%	74.8389
48	19124	113	0150.01	Southwest	80% - 100%	50% - 80%	73.5458
48	19124	113	0150.02	Southwest	50% - <80%	50% - 80%	77.5598
48	19124	113	0151.01	Southwest	50% - <80%	80% - 120%	83.5452
48	19124	113	0151.02	Southwest	80% - 100%	<50%	36.3245
48	19124	113	0152.02	Southwest	80% - 100%	50% - 80%	62.183
48	19124	113	0152.05	Southwest	80% - 100%	<50%	42.2374
48	19124	113	0152.06	Southwest	50% - <80%	50% - 80%	77.7229
48	19124	113	0152.07	Southwest	50% - <80%	80% - 120%	92.6682
48	19124	113	0152.08	Southwest	50% - <80%	<50%	47.5966
48	19124	113	0153.03	Southwest	80% - 100%	50% - 80%	53.2672
48	19124	113	0153.04	Southwest	80% - 100%	50% - 80%	52.2719
48	19124	113	0153.05	Southwest	50% - <80%	50% - 80%	75.4424
48	19124	113	0153.06	Southwest	50% - <80%	80% - 120%	96.5453
48	19124	113	0154.03	Southwest	80% - 100%	50% - 80%	66.7463
48	19124	113	0154.04	Southwest	80% - 100%	<50%	45.8778
48	19124	113	0154.05	Southwest	50% - <80%	80% - 120%	95.1854
48	19124	113	0154.06	Southwest	50% - <80%	80% - 120%	111.0343
48	19124	113	0155.00	Southwest	50% - <80%	80% - 120%	83.646
48	19124	113	0156.00	Southwest	80% - 100%	50% - 80%	61.0473
48	19124	113	0157.00	Southwest	80% - 100%	50% - 80%	65.0433
48	19124	113	0159.00	Southwest	80% - 100%	50% - 80%	54.1221
48	19124	113	0160.01	Southwest	80% - 100%	<50%	46.4043
48	19124	113	0160.02	Southwest	80% - 100%	<50%	36.6234
48	19124	113	0161.00	Southwest	50% - <80%	50% - 80%	52.3693
48	19124	113	0162.01	Southwest	80% - 100%	50% - 80%	79.4791
48	19124	113	0162.03	Southwest	80% - 100%	<50%	49.7741
48	19124	113	0162.04	Southwest	50% - <80%	50% - 80%	53.2378
48	19124	113	0163.01	Southwest	80% - 100%	50% - 80%	73.471
48	19124	113	0163.02	Southwest	80% - 100%	<50%	47.3271
48	19124	113	0164.06	Southwest	80% - 100%	80% - 120%	81.13
48	19124	113	0164.07	Southwest	80% - 100%	50% - 80%	67.0327
48	19124	113	0164.09	Southwest	50% - <80%	>120%	126.6376
48	19124	113	0164.10	Southwest	50% - <80%	80% - 120%	101.6814
48	19124	113	0164.12	Southwest	50% - <80%	>120%	145.1939

State	MSA	County	Census Tract	Town	Minority Tract	Tract Income Catg	Percent Median
48	19124	113	0164.14	Southwest	80% - 100%	>120%	129.1094
48	19124	113	0164.15	Southwest	50% - <80%	>120%	129.594
48	19124	113	0164.16	Southwest	80% - 100%	50% - 80%	67.2309
48	19124	113	0164.17	Southwest	50% - <80%	80% - 120%	92.8256
48	19124	113	0164.18	Southwest	80% - 100%	80% - 120%	85.5132
48	19124	113	0164.19	Southwest	80% - 100%	80% - 120%	85.9027
48	19124	113	0164.20	Southwest	80% - 100%	80% - 120%	119.0749
48	19124	113	0164.21	Southwest	50% - <80%	50% - 80%	67.9816
48	19124	113	0165.11	Southwest	80% - 100%	50% - 80%	76.1478
48	19124	113	0165.13	Southwest	50% - <80%	>120%	121.3021
48	19124	113	0165.16	Southwest	80% - 100%	50% - 80%	58.9378
48	19124	113	0165.17	Southwest	80% - 100%	50% - 80%	70.3481
48	19124	113	0165.18	Southwest	50% - <80%	<50%	49.5385
48	19124	113	0165.19	Southwest	50% - <80%	80% - 120%	84.9799
48	19124	113	0165.21	Southwest	50% - <80%	80% - 120%	82.0925
48	19124	113	0165.22	Southwest	50% - <80%	50% - 80%	73.4167
48	19124	113	0165.24	Southwest	50% - <80%	>120%	140.9092
48	19124	113	0165.25	Southwest	50% - <80%	>120%	149.3879
48	19124	113	0165.26	Southwest	80% - 100%	50% - 80%	57.8089
48	19124	113	0165.27	Southwest	80% - 100%	50% - 80%	75.1582
48	19124	113	0165.28	Southwest	80% - 100%	50% - 80%	72.1542
48	19124	113	0165.29	Southwest	80% - 100%	80% - 120%	86.5934
48	19124	113	0165.30	Southwest	80% - 100%	80% - 120%	83.8056
48	19124	113	0165.31	Southwest	50% - <80%	80% - 120%	87.677
48	19124	113	0165.32	Southwest	50% - <80%	80% - 120%	115.6372
48	19124	113	0165.33	Southwest	80% - 100%	50% - 80%	59.3285
48	19124	113	0165.34	Southwest	80% - 100%	50% - 80%	54.968
48	19124	113	0165.35	Southwest	50% - <80%	50% - 80%	62.4763
48	19124	113	0165.36	Southwest	80% - 100%	50% - 80%	53.6341
48	19124	113	0166.07	Southwest	80% - 100%	<50%	34.5139
48	19124	113	0166.10	Southwest	80% - 100%	80% - 120%	80.6533
48	19124	113	0166.15	Southwest	80% - 100%	80% - 120%	101.6327
48	19124	113	0166.16	Southwest	80% - 100%	80% - 120%	97.1828
48	19124	113	0166.17	Southwest	80% - 100%	>120%	122.8058
48	19124	113	0166.18	Southwest	80% - 100%	80% - 120%	88.3077
48	19124	113	0166.19	Southwest	80% - 100%	50% - 80%	62.1355
48	19124	113	0166.20	Southwest	80% - 100%	80% - 120%	108.8988
48	19124	113	0166.21	Southwest	80% - 100%	50% - 80%	77.8463
48	19124	113	0166.22	Southwest	80% - 100%	80% - 120%	84.0095
48	19124	113	0166.23	Southwest	80% - 100%	80% - 120%	106.6987
48	19124	113	0166.24	Southwest	80% - 100%	80% - 120%	97.3639
48	19124	113	0166.26	Southwest	80% - 100%	50% - 80%	61.4516
48	19124	113	0166.27	Southwest	80% - 100%	80% - 120%	90.6697
48	19124	113	0166.28	Southwest	80% - 100%	80% - 120%	93.3125
48	19124	113	0166.29	Southwest	80% - 100%	80% - 120%	99.1949
48	19124	113	0166.30	Southwest	80% - 100%	80% - 120%	115.225
48	19124	113	0166.31	Southwest	80% - 100%	>120%	163.124
48	19124	113	0166.32	Southwest	80% - 100%	80% - 120%	91.8292
48	19124	113	0166.33	Southwest	80% - 100%	80% - 120%	93.3205
48	19124	113	0166.34	Southwest	80% - 100%	50% - 80%	52.897
48	19124	113	0166.35	Southwest	80% - 100%	<50%	26.0601
48	19124	113	0166.36	Southwest	80% - 100%	80% - 120%	102.2023
48	19124	113	0166.37	Southwest	80% - 100%	80% - 120%	86.6217
48	19124	113	0166.38	Southwest	80% - 100%	50% - 80%	74.7653
48	19124	113	0167.04	Southwest	80% - 100%	50% - 80%	63.6924
48	19124	113	0167.06	Southwest	80% - 100%	<50%	41.6962
48	19124	113	0167.07	Southwest	80% - 100%	50% - 80%	56.0233

State	MSA	County	Census Tract	Town	Minority Tract	Tract Income Catg	Percent Median
48	19124	113	0167.08	Southwest	80% - 100%	80% - 120%	113.2831
48	19124	113	0167.09	Southwest	80% - 100%	<50%	30.681
48	19124	113	0167.10	Southwest	80% - 100%	<50%	44.134
48	19124	113	0167.11	Southwest	80% - 100%	<50%	42.431
48	19124	113	0168.02	Southwest	80% - 100%	80% - 120%	87.8152
48	19124	113	0168.03	Southwest	80% - 100%	<50%	48.9769
48	19124	113	0168.05	Southwest	80% - 100%	80% - 120%	102.7401
48	19124	113	0168.06	Southwest	80% - 100%	80% - 120%	89.7695
48	19124	113	0169.02	Southwest	50% - <80%	<50%	46.1235
48	19124	113	0169.03	Southwest	80% - 100%	50% - 80%	64.2631
48	19124	113	0170.05	Northeast	80% - 100%	50% - 80%	65.6717
48	19124	113	0170.06	Northeast	50% - <80%	50% - 80%	71.9889
48	19124	113	0170.07	Northeast	50% - <80%	<50%	45.5687
48	19124	113	0170.08	Northeast	50% - <80%	80% - 120%	80.0169
48	19124	113	0170.09	Northeast	80% - 100%	<50%	36.4196
48	19124	113	0170.10	Northeast	80% - 100%	<50%	45.426
48	19124	113	0171.01	Northeast	80% - 100%	50% - 80%	53.8775
48	19124	113	0171.02	Northeast	80% - 100%	50% - 80%	60.659
48	19124	113	0172.01	Northeast	80% - 100%	<50%	48.0337
48	19124	113	0172.03	Northeast	80% - 100%	50% - 80%	67.1629
48	19124	113	0172.04	Northeast	80% - 100%	50% - 80%	57.2586
48	19124	113	0173.07	Northeast	50% - <80%	>120%	122.4514
48	19124	113	0173.08	Northeast	50% - <80%	80% - 120%	113.779
48	19124	113	0173.09	Northeast	80% - 100%	80% - 120%	99.7554
48	19124	113	0173.10	Northeast	50% - <80%	80% - 120%	109.1422
48	19124	113	0173.11	Northeast	50% - <80%	80% - 120%	102.4559
48	19124	113	0173.12	Northeast	50% - <80%	80% - 120%	80.052
48	19124	113	0173.13	Northeast	80% - 100%	80% - 120%	106.5085
48	19124	113	0173.14	Northeast	80% - 100%	80% - 120%	101.6203
48	19124	113	0173.15	Northeast	80% - 100%	50% - 80%	62.1944
48	19124	113	0174.00	Northeast	50% - <80%	50% - 80%	65.58
48	19124	113	0175.00	Northeast	50% - <80%	80% - 120%	89.7831
48	19124	113	0176.02	Northeast	80% - 100%	50% - 80%	61.746
48	19124	113	0176.04	Northeast	80% - 100%	50% - 80%	53.1891
48	19124	113	0176.05	Northeast	80% - 100%	50% - 80%	51.211
48	19124	113	0176.06	Northeast	80% - 100%	50% - 80%	51.5642
48	19124	113	0177.03	Northeast	50% - <80%	<50%	44.279
48	19124	113	0177.04	Northeast	50% - <80%	50% - 80%	57.63
48	19124	113	0177.05	Northeast	80% - 100%	<50%	49.4355
48	19124	113	0177.06	Northeast	50% - <80%	80% - 120%	95.747
48	19124	113	0178.05	Northeast	50% - <80%	50% - 80%	52.1021
48	19124	113	0178.06	Northeast	80% - 100%	50% - 80%	71.682
48	19124	113	0178.08	Northeast	50% - <80%	80% - 120%	84.3843
48	19124	113	0178.11	Northeast	50% - <80%	80% - 120%	92.7962
48	19124	113	0178.12	Northeast	50% - <80%	80% - 120%	95.4741
48	19124	113	0178.14	Northeast	50% - <80%	80% - 120%	97.2801
48	19124	113	0178.15	Northeast	50% - <80%	<50%	38.4453
48	19124	113	0178.16	Northeast	50% - <80%	50% - 80%	70.253
48	19124	113	0178.17	Northeast	80% - 100%	50% - 80%	69.9292
48	19124	113	0178.18	Northeast	50% - <80%	50% - 80%	76.9416
48	19124	113	0178.19	Northeast	80% - 100%	50% - 80%	72.1847
48	19124	113	0178.20	Northeast	50% - <80%	80% - 120%	97.219
48	19124	113	0179.00	Northeast	80% - 100%	50% - 80%	68.2534
48	19124	113	0180.01	Northeast	50% - <80%	50% - 80%	71.5506
48	19124	113	0180.02	Northeast	80% - 100%	50% - 80%	62.5125
48	19124	113	0181.05	Northeast	80% - 100%	50% - 80%	72.3614
48	19124	113	0181.10	Northeast	20% - <50%	80% - 120%	96.0663

State	MSA	County	Census Tract	Town	Minority Tract	Tract Income Catg	Percent Median
48	19124	113	0181.11	Northeast	50% - <80%	80% - 120%	89.0607
48	19124	113	0181.20	Northeast	50% - <80%	80% - 120%	97.5326
48	19124	113	0181.21	Northeast	50% - <80%	50% - 80%	72.5392
48	19124	113	0181.26	Northeast	50% - <80%	80% - 120%	93.8141
48	19124	113	0181.27	Northeast	50% - <80%	50% - 80%	68.4108
48	19124	113	0181.28	Northeast	50% - <80%	50% - 80%	76.6596
48	19124	113	0181.29	Northeast	50% - <80%	50% - 80%	79.2934
48	19124	113	0181.30	Northeast	50% - <80%	50% - 80%	51.2517
48	19124	113	0181.32	Northeast	50% - <80%	80% - 120%	94.5909
48	19124	113	0181.33	Northeast	20% - <50%	80% - 120%	100.5627
48	19124	113	0181.34	Northeast	50% - <80%	80% - 120%	106.3262
48	19124	113	0181.35	Northeast	50% - <80%	80% - 120%	83.0357
48	19124	113	0181.37	Northeast	50% - <80%	80% - 120%	100.7756
48	19124	113	0181.38	Northeast	50% - <80%	50% - 80%	52.9909
48	19124	113	0181.40	Northeast	50% - <80%	>120%	128.5749
48	19124	113	0181.41	Northeast	50% - <80%	50% - 80%	51.6616
48	19124	113	0181.42	Northeast	50% - <80%	80% - 120%	103.2452
48	19124	113	0181.43	Northeast	50% - <80%	>120%	192.7554
48	19124	113	0181.44	Northeast	50% - <80%	>120%	140.779
48	19124	113	0181.45	Northeast	20% - <50%	>120%	141.0824
48	19124	113	0181.46	Northeast	20% - <50%	>120%	149.4864
48	19124	113	0181.47	Northeast	50% - <80%	>120%	142.4763
48	19124	113	0181.48	Northeast	80% - 100%	80% - 120%	85.7815
48	19124	113	0181.49	Northeast	50% - <80%	>120%	164.4397
48	19124	113	0181.50	Northeast	50% - <80%	80% - 120%	116.1784
48	19124	113	0181.51	Northeast	50% - <80%	80% - 120%	106.9195
48	19124	113	0181.52	Northeast	50% - <80%	80% - 120%	97.6447
48	19124	113	0181.53	Northeast	50% - <80%	>120%	121.2806
48	19124	113	0181.54	Northeast	20% - <50%	80% - 120%	104.2925
48	19124	113	0181.55	Northeast	50% - <80%	>120%	121.4855
48	19124	113	0181.56	Northeast	50% - <80%	80% - 120%	111.2257
48	19124	113	0181.57	Northeast	50% - <80%	80% - 120%	85.8132
48	19124	113	0181.58	Northeast	50% - <80%	>120%	125.3897
48	19124	113	0181.59	Northeast	20% - <50%	>120%	153.1495
48	19124	113	0182.03	Northeast	80% - 100%	50% - 80%	78.0694
48	19124	113	0182.04	Northeast	80% - 100%	50% - 80%	53.4122
48	19124	113	0182.05	Northeast	80% - 100%	50% - 80%	60.1222
48	19124	113	0182.06	Northeast	80% - 100%	50% - 80%	55.0993
48	19124	113	0183.00	Northeast	50% - <80%	50% - 80%	59.9558
48	19124	113	0184.01	Northeast	50% - <80%	50% - 80%	57.3424
48	19124	113	0184.02	Northeast	50% - <80%	80% - 120%	83.2134
48	19124	113	0184.03	Northeast	80% - 100%	50% - 80%	52.3693
48	19124	113	0185.01	Northeast	50% - <80%	50% - 80%	74.5728
48	19124	113	0185.05	Northeast	80% - 100%	<50%	40.9488
48	19124	113	0185.06	Northeast	80% - 100%	<50%	35.0653
48	19124	113	0185.07	Northeast	80% - 100%	50% - 80%	68.6463
48	19124	113	0185.08	Northeast	80% - 100%	<50%	44.7262
48	19124	113	0186.00	Northeast	50% - <80%	50% - 80%	78.3773
48	19124	113	0187.00	Northeast	80% - 100%	50% - 80%	59.8007
48	19124	113	0188.01	Northeast	50% - <80%	50% - 80%	64.5416
48	19124	113	0188.02	Northeast	50% - <80%	50% - 80%	51.6299
48	19124	113	0189.00	Northeast	50% - <80%	50% - 80%	66.4507
48	19124	113	0190.13	Northeast	80% - 100%	<50%	37.0775
48	19124	113	0190.16	Northeast	50% - <80%	50% - 80%	54.669
48	19124	113	0190.18	Northeast	50% - <80%	50% - 80%	66.1212
48	19124	113	0190.19	Northeast	80% - 100%	<50%	42.0574
48	19124	113	0190.20	Northeast	50% - <80%	50% - 80%	61.6475

State	MSA	County	Census Tract	Town	Minority Tract	Tract Income Catg	Percent Median
48	19124	113	0190.23	Northeast	20% - <50%	80% - 120%	115.6281
48	19124	113	0190.24	Northeast	50% - <80%	80% - 120%	110.5633
48	19124	113	0190.25	Northeast	50% - <80%	80% - 120%	107.3169
48	19124	113	0190.26	Northeast	50% - <80%	80% - 120%	89.8771
48	19124	113	0190.27	Northeast	50% - <80%	50% - 80%	79.8833
48	19124	113	0190.28	Northeast	50% - <80%	50% - 80%	63.5396
48	19124	113	0190.29	Northeast	50% - <80%	50% - 80%	74.352
48	19124	113	0190.31	Northeast	20% - <50%	80% - 120%	106.2186
48	19124	113	0190.32	Northeast	80% - 100%	50% - 80%	57.8021
48	19124	113	0190.33	Northeast	80% - 100%	50% - 80%	60.3997
48	19124	113	0190.34	Northeast	80% - 100%	50% - 80%	54.823
48	19124	113	0190.35	Northeast	80% - 100%	<50%	38.7816
48	19124	113	0190.36	Northeast	20% - <50%	>120%	140.574
48	19124	113	0190.37	Northeast	20% - <50%	80% - 120%	111.8156
48	19124	113	0190.39	Northeast	50% - <80%	80% - 120%	101.1492
48	19124	113	0190.40	Northeast	50% - <80%	80% - 120%	83.7026
48	19124	113	0190.41	Northeast	20% - <50%	80% - 120%	99.6161
48	19124	113	0190.42	Northeast	50% - <80%	80% - 120%	99.0364
48	19124	113	0190.44	Northeast	50% - <80%	80% - 120%	80.454
48	19124	113	0190.45	Northeast	80% - 100%	50% - 80%	60.9352
48	19124	113	0190.46	Northeast	80% - 100%	80% - 120%	88.5534
48	19124	113	0190.47	Northeast	80% - 100%	50% - 80%	54.4788
48	19124	113	0190.48	Northeast	50% - <80%	80% - 120%	106.025
48	19124	113	0190.49	Northeast	50% - <80%	50% - 80%	70.6459
48	19124	113	0190.50	Northeast	20% - <50%	>120%	194.3803
48	19124	113	0190.51	Northeast	20% - <50%	>120%	150.9313
48	19124	113	0190.52	Northeast	50% - <80%	80% - 120%	92.315
48	19124	113	0190.53	Northeast	50% - <80%	80% - 120%	107.2864
48	19124	113	0191.01	Northeast	50% - <80%	80% - 120%	116.2758
48	19124	113	0191.02	Northeast	50% - <80%	80% - 120%	99.4191
48	19124	113	0192.02	Northeast	50% - <80%	80% - 120%	82.0347
48	19124	113	0192.03	Northeast	20% - <50%	>120%	148.7244
48	19124	113	0192.05	Northeast	20% - <50%	>120%	159.3251
48	19124	113	0192.08	Northeast	80% - 100%	50% - 80%	55.8727
48	19124	113	0192.10	Northeast	10% - <20%	>120%	208.6282
48	19124	113	0192.11	Northeast	20% - <50%	50% - 80%	67.4358
48	19124	113	0192.12	Northeast	80% - 100%	<50%	35.8229
48	19124	113	0192.13	Northeast	80% - 100%	<50%	39.8335
48	19124	113	0192.14	Northeast	80% - 100%	50% - 80%	66.2628
48	19124	113	0192.15	Northeast	20% - <50%	80% - 120%	118.0558
48	19124	113	0192.16	Northeast	20% - <50%	80% - 120%	98.0082
48	19124	113	0193.01	Northeast	10% - <20%	>120%	283.0787
48	19124	113	0193.02	Northeast	20% - <50%	>120%	283.0787
48	19124	113	0194.00	Northeast	20% - <50%	>120%	283.0787
48	19124	113	0195.01	Northeast	10% - <20%	>120%	283.0787
48	19124	113	0195.02	Northeast	10% - <20%	>120%	283.0787
48	19124	113	0196.00	Northeast	10% - <20%	>120%	283.0787
48	19124	113	0197.00	Northeast	10% - <20%	>120%	283.0787
48	19124	113	0198.00	Northeast	10% - <20%	>120%	252.4542
48	19124	113	0199.00	Southwest	80% - 100%	50% - 80%	67.3475
48	19124	113	0200.00	Southwest	50% - <80%	>120%	186.2016
48	19124	113	0201.00	Southwest	50% - <80%	50% - 80%	67.1528
48	19124	113	0202.00	Southwest	80% - 100%	<50%	40.2094
48	19124	113	0203.00	Northeast	80% - 100%	50% - 80%	57.9697
48	19124	113	0204.01	Northeast	20% - <50%	80% - 120%	94.224
48	19124	113	0204.02	Northeast	50% - <80%	>120%	127.1233
48	19124	113	0205.00	Southwest	80% - 100%	50% - 80%	50.1556

State	MSA	County	Census Tract	Town	Minority Tract	Tract Income Catg	Percent Median
48	19124	113	0206.00	Northeast	10% - <20%	>120%	283.0787
48	19124	113	0207.00	Northeast	20% - <50%	80% - 120%	90.2315
48	19124	113	0208.00	Northeast	80% - 100%	<50%	35.6122
48	19124	113	0209.00	Northeast	80% - 100%	80% - 120%	80.3238
48	19124	113	0210.00	Southwest	80% - 100%	<50%	35.533
48	19124	113	0211.00	Southwest	80% - 100%	<50%	36.6449
48	19124	113	0212.00	Southwest	80% - 100%	50% - 80%	54.3022
48	19124	113	9800.00	Southwest	50% - <80%	N/A	0
48	19124	113	9801.00	Northeast	80% - 100%	N/A	0
48	19124	113	9802.00	Northeast	20% - <50%	<50%	28.036
48	19124	121	0201.09	Pilot Point-Aubrey	50% - <80%	>120%	196.303
48	19124	121	0201.10	Pilot Point-Aubrey	20% - <50%	>120%	187.9533
48	19124	121	0201.11	Pilot Point-Aubrey	20% - <50%	>120%	212.1949
48	19124	121	0201.12	Pilot Point-Aubrey	20% - <50%	>120%	134.7596
48	19124	121	0201.15	Pilot Point-Aubrey	20% - <50%	80% - 120%	117.0729
48	19124	121	0201.16	Pilot Point-Aubrey	20% - <50%	80% - 120%	112.9808
48	19124	121	0201.17	Pilot Point-Aubrey	20% - <50%	80% - 120%	81.7154
48	19124	121	0201.18	Pilot Point-Aubrey	20% - <50%	80% - 120%	95.088
48	19124	121	0201.19	Pilot Point-Aubrey	50% - <80%	80% - 120%	82.1219
48	19124	121	0201.20	Pilot Point-Aubrey	50% - <80%	>120%	130.7863
48	19124	121	0201.21	Pilot Point-Aubrey	20% - <50%	80% - 120%	115.3031
48	19124	121	0201.22	Pilot Point-Aubrey	20% - <50%	80% - 120%	102.782
48	19124	121	0201.23	Pilot Point-Aubrey	50% - <80%	80% - 120%	118.9763
48	19124	121	0201.24	Pilot Point-Aubrey	50% - <80%	>120%	131.348
48	19124	121	0201.25	Pilot Point-Aubrey	20% - <50%	>120%	143.74
48	19124	121	0201.26	Pilot Point-Aubrey	50% - <80%	80% - 120%	107.7234
48	19124	121	0201.27	Pilot Point-Aubrey	50% - <80%	80% - 120%	101.986
48	19124	121	0201.28	Pilot Point-Aubrey	20% - <50%	>120%	171.4193
48	19124	121	0201.29	Pilot Point-Aubrey	20% - <50%	80% - 120%	101.2002
48	19124	121	0201.30	Pilot Point-Aubrey	20% - <50%	80% - 120%	117.4772
48	19124	121	0201.31	Pilot Point-Aubrey	20% - <50%	>120%	135.5624
48	19124	121	0201.32	Pilot Point-Aubrey	50% - <80%	>120%	135.4186
48	19124	121	0201.33	Pilot Point-Aubrey	50% - <80%	>120%	130.2587
48	19124	121	0201.34	Pilot Point-Aubrey	50% - <80%	>120%	219.6048
48	19124	121	0201.35	Pilot Point-Aubrey	50% - <80%	>120%	154.3871
48	19124	121	0201.36	Pilot Point-Aubrey	50% - <80%	>120%	130.9154
48	19124	121	0201.37	Pilot Point-Aubrey	50% - <80%	>120%	139.624
48	19124	121	0202.03	Sanger	20% - <50%	80% - 120%	92.6071
48	19124	121	0202.04	Sanger	20% - <50%	80% - 120%	97.3515
48	19124	121	0202.05	Sanger	20% - <50%	>120%	139.0013
48	19124	121	0202.06	Sanger	20% - <50%	80% - 120%	95.2918
48	19124	121	0202.07	Sanger	20% - <50%	80% - 120%	100.1811
48	19124	121	0202.08	Sanger	20% - <50%	80% - 120%	81.3146
48	19124	121	0203.05	Justin-Roanoke	10% - <20%	>120%	190.903
48	19124	121	0203.10	Justin-Roanoke	<10%	80% - 120%	118.7204
48	19124	121	0203.11	Justin-Roanoke	20% - <50%	>120%	124.5745
48	19124	121	0203.12	Justin-Roanoke	20% - <50%	>120%	151.7816
48	19124	121	0203.13	Justin-Roanoke	20% - <50%	80% - 120%	116.5339
48	19124	121	0203.14	Justin-Roanoke	20% - <50%	>120%	120.6454
48	19124	121	0203.15	Justin-Roanoke	20% - <50%	>120%	151.4465
48	19124	121	0203.16	Justin-Roanoke	10% - <20%	>120%	224.9447
48	19124	121	0203.17	Justin-Roanoke	20% - <50%	>120%	169.5204
48	19124	121	0203.18	Justin-Roanoke	20% - <50%	>120%	122.4967
48	19124	121	0203.19	Justin-Roanoke	20% - <50%	80% - 120%	110.6788
48	19124	121	0203.20	Justin-Roanoke	20% - <50%	>120%	129.2724
48	19124	121	0203.21	Justin-Roanoke	20% - <50%	>120%	210.022
48	19124	121	0203.22	Justin-Roanoke	20% - <50%	>120%	132.8517

State	MSA	County	Census Tract	Town	Minority Tract	Tract Income Catg	Percent Median
48	19124	121	0204.02	Denton	20% - <50%	80% - 120%	110.7999
48	19124	121	0204.03	Denton	20% - <50%	80% - 120%	82.0925
48	19124	121	0204.04	Denton	20% - <50%	50% - 80%	77.7387
48	19124	121	0204.05	Denton	20% - <50%	80% - 120%	112.0659
48	19124	121	0205.04	Denton	50% - <80%	50% - 80%	72.8336
48	19124	121	0205.05	Denton	20% - <50%	80% - 120%	114.5377
48	19124	121	0205.06	Denton	20% - <50%	80% - 120%	105.9185
48	19124	121	0205.07	Denton	20% - <50%	50% - 80%	66.7259
48	19124	121	0205.08	Denton	20% - <50%	50% - 80%	60.1222
48	19124	121	0206.01	Denton	50% - <80%	<50%	39.1586
48	19124	121	0206.03	Denton	50% - <80%	50% - 80%	73.3001
48	19124	121	0206.04	Denton	50% - <80%	80% - 120%	87.6091
48	19124	121	0206.05	Denton	50% - <80%	50% - 80%	75.7844
48	19124	121	0207.00	Denton	20% - <50%	50% - 80%	64.6571
48	19124	121	0208.00	Denton	50% - <80%	50% - 80%	75.9282
48	19124	121	0209.00	Denton	50% - <80%	<50%	33.4971
48	19124	121	0210.00	Denton	50% - <80%	50% - 80%	52.7803
48	19124	121	0211.00	Denton	20% - <50%	50% - 80%	57.5745
48	19124	121	0212.02	Denton	50% - <80%	50% - 80%	71.5031
48	19124	121	0212.03	Denton	50% - <80%	<50%	39.9784
48	19124	121	0212.04	Denton	50% - <80%	<50%	46.462
48	19124	121	0213.01	Denton	50% - <80%	N/A	0
48	19124	121	0213.04	Denton	20% - <50%	80% - 120%	119.3285
48	19124	121	0213.05	Denton	20% - <50%	>120%	125.2392
48	19124	121	0213.06	Denton	20% - <50%	80% - 120%	113.2072
48	19124	121	0213.07	Denton	20% - <50%	>120%	129.662
48	19124	121	0214.10	Lewisville	20% - <50%	>120%	174.4426
48	19124	121	0214.11	Lewisville	20% - <50%	50% - 80%	76.269
48	19124	121	0214.12	Lewisville	20% - <50%	>120%	148.558
48	19124	121	0214.13	Lewisville	20% - <50%	>120%	142.7322
48	19124	121	0214.14	Lewisville	50% - <80%	50% - 80%	75.7142
48	19124	121	0214.15	Lewisville	50% - <80%	>120%	126.5526
48	19124	121	0214.16	Lewisville	50% - <80%	80% - 120%	116.3641
48	19124	121	0214.17	Lewisville	20% - <50%	>120%	188.9712
48	19124	121	0214.18	Lewisville	20% - <50%	>120%	145.452
48	19124	121	0214.19	Lewisville	20% - <50%	80% - 120%	97.6617
48	19124	121	0214.20	Lewisville	20% - <50%	80% - 120%	104.3141
48	19124	121	0214.21	Lewisville	20% - <50%	>120%	133.1948
48	19124	121	0214.22	Lewisville	20% - <50%	80% - 120%	99.6727
48	19124	121	0214.23	Lewisville	20% - <50%	80% - 120%	114.2037
48	19124	121	0215.02	Lewisville	50% - <80%	50% - 80%	70.1692
48	19124	121	0215.05	Lewisville	20% - <50%	80% - 120%	118.0388
48	19124	121	0215.12	Lewisville	20% - <50%	>120%	206.9036
48	19124	121	0215.13	Lewisville	10% - <20%	>120%	161.9045
48	19124	121	0215.14	Lewisville	10% - <20%	>120%	163.3267
48	19124	121	0215.16	Colony	20% - <50%	>120%	138.4962
48	19124	121	0215.17	Colony	50% - <80%	80% - 120%	83.5078
48	19124	121	0215.18	Colony	20% - <50%	>120%	121.5659
48	19124	121	0215.20	Colony	20% - <50%	80% - 120%	109.286
48	19124	121	0215.21	Colony	20% - <50%	80% - 120%	106.9625
48	19124	121	0215.22	Colony	50% - <80%	>120%	178.5155
48	19124	121	0215.26	Colony	20% - <50%	>120%	164.9663
48	19124	121	0215.28	Colony	20% - <50%	>120%	202.0143
48	19124	121	0215.29	Colony	20% - <50%	>120%	189.662
48	19124	121	0215.30	Colony	50% - <80%	80% - 120%	118.0365
48	19124	121	0215.31	Colony	50% - <80%	>120%	134.7551
48	19124	121	0215.32	Colony	20% - <50%	80% - 120%	87.8321

State	MSA	County	Census Tract	Town	Minority Tract	Tract Income Catg	Percent Median
48	19124	121	0215.33	Colony	50% - <80%	>120%	128.9294
48	19124	121	0215.34	Colony	20% - <50%	>120%	253.4224
48	19124	121	0215.35	Colony	<10%	80% - 120%	85.751
48	19124	121	0215.36	Colony	50% - <80%	80% - 120%	98.0161
48	19124	121	0215.37	Colony	50% - <80%	>120%	143.2621
48	19124	121	0215.38	Colony	20% - <50%	>120%	283.0787
48	19124	121	0215.39	Colony	50% - <80%	>120%	237.8361
48	19124	121	0215.40	Colony	50% - <80%	>120%	222.3846
48	19124	121	0216.11	Hebron	50% - <80%	80% - 120%	112.5041
48	19124	121	0216.12	Hebron	50% - <80%	80% - 120%	108.9848
48	19124	121	0216.13	Hebron	50% - <80%	50% - 80%	68.0541
48	19124	121	0216.14	Hebron	50% - <80%	80% - 120%	86.958
48	19124	121	0216.15	Hebron	50% - <80%	80% - 120%	97.1397
48	19124	121	0216.16	Hebron	50% - <80%	50% - 80%	59.4236
48	19124	121	0216.18	Lewisville	50% - <80%	50% - 80%	66.2707
48	19124	121	0216.19	Lewisville	50% - <80%	80% - 120%	92.3263
48	19124	121	0216.20	Lewisville	50% - <80%	50% - 80%	79.7927
48	19124	121	0216.21	Hebron	20% - <50%	>120%	166.9614
48	19124	121	0216.22	Hebron	50% - <80%	>120%	149.6065
48	19124	121	0216.26	Hebron	20% - <50%	>120%	254.5128
48	19124	121	0216.30	Hebron	50% - <80%	80% - 120%	105.8234
48	19124	121	0216.31	Hebron	20% - <50%	>120%	151.3604
48	19124	121	0216.32	Hebron	20% - <50%	>120%	155.3065
48	19124	121	0216.33	Hebron	20% - <50%	>120%	121.5908
48	19124	121	0216.34	Hebron	50% - <80%	50% - 80%	60.7178
48	19124	121	0216.35	Hebron	50% - <80%	50% - 80%	58.5936
48	19124	121	0216.37	Hebron	50% - <80%	50% - 80%	75.55
48	19124	121	0216.38	Hebron	50% - <80%	50% - 80%	68.3666
48	19124	121	0216.39	Hebron	20% - <50%	>120%	151.6673
48	19124	121	0216.40	Hebron	50% - <80%	>120%	132.0081
48	19124	121	0216.41	Hebron	50% - <80%	80% - 120%	97.5043
48	19124	121	0216.42	Hebron	50% - <80%	50% - 80%	63.3063
48	19124	121	0216.43	Hebron	20% - <50%	>120%	211.9934
48	19124	121	0216.44	Hebron	20% - <50%	>120%	283.0787
48	19124	121	0216.45	Hebron	80% - 100%	N/A	0
48	19124	121	0216.46	Hebron	50% - <80%	80% - 120%	106.2718
48	19124	121	0216.47	Hebron	20% - <50%	50% - 80%	64.7138
48	19124	121	0216.48	Hebron	20% - <50%	>120%	161.6848
48	19124	121	0216.49	Hebron	50% - <80%	N/A	0
48	19124	121	0216.50	Hebron	50% - <80%	>120%	128.3824
48	19124	121	0216.51	Hebron	50% - <80%	>120%	202.6835
48	19124	121	0216.52	Hebron	50% - <80%	>120%	205.358
48	19124	121	0216.53	Hebron	50% - <80%	80% - 120%	94.6996
48	19124	121	0216.54	Hebron	50% - <80%	>120%	190.0164
48	19124	121	0216.55	Hebron	20% - <50%	>120%	191.0773
48	19124	121	0217.15	Lewisville	20% - <50%	80% - 120%	116.8238
48	19124	121	0217.16	Lewisville	50% - <80%	80% - 120%	99.5606
48	19124	121	0217.17	Lewisville	20% - <50%	80% - 120%	88.1967
48	19124	121	0217.19	Lewisville	20% - <50%	>120%	191.6843
48	19124	121	0217.20	Lewisville	20% - <50%	>120%	201.7471
48	19124	121	0217.21	Lewisville	20% - <50%	>120%	132.9377
48	19124	121	0217.22	Lewisville	20% - <50%	80% - 120%	116.0618
48	19124	121	0217.23	Lewisville	50% - <80%	>120%	128.0144
48	19124	121	0217.24	Lewisville	20% - <50%	>120%	183.1353
48	19124	121	0217.25	Lewisville	20% - <50%	>120%	135.2624
48	19124	121	0217.26	Lewisville	20% - <50%	>120%	160.6465
48	19124	121	0217.27	Lewisville	20% - <50%	>120%	175.8715

State	MSA	County	Census Tract	Town	Minority Tract	Tract Income Catg	Percent Median
48	19124	121	0217.28	Lewisville	50% - <80%	50% - 80%	71.0875
48	19124	121	0217.29	Lewisville	20% - <50%	>120%	148.4391
48	19124	121	0217.30	Lewisville	20% - <50%	>120%	146.068
48	19124	121	0217.31	Lewisville	50% - <80%	>120%	133.3035
48	19124	121	0217.32	Lewisville	50% - <80%	80% - 120%	85.6309
48	19124	121	0217.33	Lewisville	50% - <80%	80% - 120%	84.2574
48	19124	121	0217.34	Lewisville	50% - <80%	50% - 80%	68.0677
48	19124	121	0217.35	Lewisville	50% - <80%	80% - 120%	84.0129
48	19124	121	0217.36	Lewisville	50% - <80%	50% - 80%	78.3773
48	19124	121	0217.37	Lewisville	50% - <80%	>120%	154.2773
48	19124	121	0217.38	Lewisville	50% - <80%	80% - 120%	105.0127
48	19124	121	0217.39	Lewisville	80% - 100%	<50%	34.1459
48	19124	121	0217.40	Lewisville	50% - <80%	80% - 120%	82.5612
48	19124	121	0217.41	Lewisville	50% - <80%	80% - 120%	105.8393
48	19124	121	0217.42	Lewisville	50% - <80%	80% - 120%	106.5583
48	19124	121	0217.43	Lewisville	50% - <80%	80% - 120%	88.8954
48	19124	121	0217.44	Lewisville	50% - <80%	50% - 80%	68.8818
48	19124	121	0217.45	Lewisville	50% - <80%	80% - 120%	82.4673
48	19124	121	0217.46	Lewisville	20% - <50%	>120%	183.6856
48	19124	121	0217.48	Lewisville	20% - <50%	>120%	154.9261
48	19124	121	0217.49	Lewisville	20% - <50%	>120%	255.3144
48	19124	121	0217.50	Lewisville	20% - <50%	>120%	258.0048
48	19124	121	0217.51	Lewisville	20% - <50%	>120%	248.5817
48	19124	121	0217.52	Lewisville	20% - <50%	>120%	205.1101
48	19124	121	0217.54	Lewisville	20% - <50%	>120%	207.5649
48	19124	121	0217.55	Lewisville	20% - <50%	>120%	201.1832
48	19124	121	0217.56	Lewisville	20% - <50%	>120%	215.4492
48	19124	121	0217.57	Lewisville	20% - <50%	>120%	182.3823
48	19124	121	0217.58	Lewisville	20% - <50%	>120%	184.0004
48	19124	121	0217.59	Lewisville	20% - <50%	80% - 120%	111.1725
48	19124	121	0218.00	Colony	20% - <50%	>120%	190.193
48	19124	121	0219.00	Colony	20% - <50%	>120%	216.3516
48	23104	439	1001.01	Fort Worth	80% - 100%	50% - 80%	73.8012
48	23104	439	1001.02	Fort Worth	50% - <80%	50% - 80%	75.3245
48	23104	439	1002.01	Fort Worth	80% - 100%	<50%	46.7337
48	23104	439	1002.02	Fort Worth	80% - 100%	50% - 80%	53.3581
48	23104	439	1003.00	Fort Worth	80% - 100%	50% - 80%	60.3455
48	23104	439	1004.01	Fort Worth	80% - 100%	50% - 80%	64.1096
48	23104	439	1004.02	Fort Worth	80% - 100%	50% - 80%	54.6419
48	23104	439	1005.03	Fort Worth	80% - 100%	50% - 80%	79.967
48	23104	439	1005.04	Fort Worth	80% - 100%	50% - 80%	54.6104
48	23104	439	1005.05	Fort Worth	50% - <80%	50% - 80%	55.6727
48	23104	439	1005.06	Fort Worth	80% - 100%	50% - 80%	66.953
48	23104	439	1006.01	Fort Worth	20% - <50%	80% - 120%	102.9304
48	23104	439	1006.02	Fort Worth	50% - <80%	50% - 80%	53.8421
48	23104	439	1007.00	Fort Worth	50% - <80%	50% - 80%	70.8671
48	23104	439	1008.00	Fort Worth	80% - 100%	50% - 80%	57.6062
48	23104	439	1009.00	Fort Worth	80% - 100%	50% - 80%	67.2083
48	23104	439	1012.01	Fort Worth	50% - <80%	50% - 80%	78.866
48	23104	439	1012.02	Fort Worth	80% - 100%	50% - 80%	71.0559
48	23104	439	1013.01	Fort Worth	50% - <80%	80% - 120%	86.1413
48	23104	439	1013.02	Fort Worth	50% - <80%	50% - 80%	53.8796
48	23104	439	1014.01	Fort Worth	50% - <80%	80% - 120%	83.183
48	23104	439	1014.02	Fort Worth	80% - 100%	50% - 80%	51.5965
48	23104	439	1014.03	Fort Worth	80% - 100%	<50%	46.9987
48	23104	439	1015.00	Fort Worth	50% - <80%	50% - 80%	58.8633
48	23104	439	1017.00	Fort Worth	50% - <80%	<50%	33.2175

State	MSA	County	Census Tract	Town	Minority Tract	Tract Income Catg	Percent Median
48	23104	439	1020.00	Fort Worth	20% - <50%	>120%	210.6498
48	23104	439	1021.01	Fort Worth	10% - <20%	>120%	137.2333
48	23104	439	1021.02	Fort Worth	20% - <50%	>120%	121.9446
48	23104	439	1022.01	Fort Worth	20% - <50%	>120%	183.4347
48	23104	439	1022.02	Fort Worth	10% - <20%	>120%	197.7349
48	23104	439	1023.01	Fort Worth	50% - <80%	50% - 80%	74.6131
48	23104	439	1023.02	Fort Worth	50% - <80%	50% - 80%	68.2875
48	23104	439	1024.01	Fort Worth	20% - <50%	80% - 120%	108.9668
48	23104	439	1024.02	Fort Worth	20% - <50%	>120%	157.8155
48	23104	439	1025.00	Fort Worth	80% - 100%	50% - 80%	55.8349
48	23104	439	1026.01	Fort Worth	50% - <80%	50% - 80%	61.253
48	23104	439	1026.02	Fort Worth	50% - <80%	80% - 120%	97.551
48	23104	439	1027.00	Fort Worth	20% - <50%	80% - 120%	96.1778
48	23104	439	1035.00	Fort Worth	80% - 100%	50% - 80%	54.2789
48	23104	439	1036.01	Fort Worth	80% - 100%	<50%	27.9108
48	23104	439	1036.02	Fort Worth	80% - 100%	50% - 80%	50.2413
48	23104	439	1037.01	Fort Worth	80% - 100%	50% - 80%	55.7707
48	23104	439	1037.02	Fort Worth	80% - 100%	<50%	47.7634
48	23104	439	1038.00	Fort Worth	80% - 100%	<50%	43.7597
48	23104	439	1041.00	Fort Worth	20% - <50%	>120%	137.3349
48	23104	439	1042.02	Fort Worth	20% - <50%	>120%	132.3367
48	23104	439	1042.03	Fort Worth	50% - <80%	>120%	302.4852
48	23104	439	1042.04	Fort Worth	10% - <20%	>120%	195.1021
48	23104	439	1043.01	Fort Worth	20% - <50%	80% - 120%	104.6134
48	23104	439	1043.02	Fort Worth	20% - <50%	>120%	182.3167
48	23104	439	1044.00	Fort Worth	50% - <80%	80% - 120%	86.2079
48	23104	439	1045.02	Fort Worth	80% - 100%	50% - 80%	70.4073
48	23104	439	1045.03	Fort Worth	80% - 100%	50% - 80%	53.4924
48	23104	439	1045.04	Fort Worth	80% - 100%	50% - 80%	65.0558
48	23104	439	1045.05	Fort Worth	80% - 100%	<50%	37.9956
48	23104	439	1046.01	Fort Worth	80% - 100%	50% - 80%	52.8318
48	23104	439	1046.02	Fort Worth	80% - 100%	50% - 80%	50.7168
48	23104	439	1046.03	Fort Worth	80% - 100%	50% - 80%	64.7775
48	23104	439	1046.04	Fort Worth	80% - 100%	50% - 80%	50.0937
48	23104	439	1046.05	Fort Worth	80% - 100%	<50%	48.2534
48	23104	439	1047.01	Fort Worth	80% - 100%	50% - 80%	63.7382
48	23104	439	1047.02	Fort Worth	80% - 100%	<50%	47.3411
48	23104	439	1048.02	Fort Worth	80% - 100%	50% - 80%	54.5632
48	23104	439	1048.03	Fort Worth	80% - 100%	<50%	44.6962
48	23104	439	1048.04	Fort Worth	80% - 100%	50% - 80%	62.8343
48	23104	439	1049.00	Fort Worth	80% - 100%	50% - 80%	60.3044
48	23104	439	1050.07	Fort Worth	50% - <80%	80% - 120%	93.499
48	23104	439	1050.08	Fort Worth	50% - <80%	50% - 80%	77.2749
48	23104	439	1050.09	Fort Worth	80% - 100%	50% - 80%	58.1277
48	23104	439	1052.01	Fort Worth	50% - <80%	<50%	40.43
48	23104	439	1052.03	Fort Worth	20% - <50%	50% - 80%	74.8333
48	23104	439	1052.04	Fort Worth	50% - <80%	<50%	36.73
48	23104	439	1052.06	Fort Worth	50% - <80%	<50%	40.5449
48	23104	439	1052.07	Fort Worth	50% - <80%	<50%	34.4541
48	23104	439	1054.03	Fort Worth	20% - <50%	>120%	201.1833
48	23104	439	1054.04	Fort Worth	10% - <20%	>120%	203.2547
48	23104	439	1054.05	Fort Worth	20% - <50%	>120%	152.7544
48	23104	439	1054.07	Fort Worth	20% - <50%	80% - 120%	85.4118
48	23104	439	1054.08	Fort Worth	20% - <50%	>120%	166.417
48	23104	439	1055.02	Fort Worth	50% - <80%	80% - 120%	100.7271
48	23104	439	1055.03	Fort Worth	20% - <50%	80% - 120%	86.0736
48	23104	439	1055.05	Fort Worth	50% - <80%	80% - 120%	80.6857

State	MSA	County	Census Tract	Town	Minority Tract	Tract Income Catg	Percent Median
48	23104	439	1055.11	Fort Worth	50% - <80%	50% - 80%	73.4842
48	23104	439	1055.12	Fort Worth	50% - <80%	80% - 120%	115.4484
48	23104	439	1055.13	Fort Worth	50% - <80%	<50%	44.4276
48	23104	439	1055.14	Fort Worth	50% - <80%	50% - 80%	59.4344
48	23104	439	1055.15	Fort Worth	50% - <80%	80% - 120%	103.8524
48	23104	439	1055.16	Fort Worth	50% - <80%	80% - 120%	96.0386
48	23104	439	1055.17	Fort Worth	50% - <80%	50% - 80%	52.9988
48	23104	439	1055.18	Fort Worth	20% - <50%	80% - 120%	90.2721
48	23104	439	1055.19	Fort Worth	20% - <50%	>120%	127.6421
48	23104	439	1055.20	Fort Worth	20% - <50%	>120%	252.2643
48	23104	439	1056.00	Fort Worth	50% - <80%	80% - 120%	94.1257
48	23104	439	1057.01	Fort Worth	50% - <80%	80% - 120%	95.3683
48	23104	439	1057.03	Fort Worth	50% - <80%	80% - 120%	92.1717
48	23104	439	1057.05	Fort Worth	80% - 100%	50% - 80%	64.2052
48	23104	439	1057.06	Fort Worth	80% - 100%	50% - 80%	69.1998
48	23104	439	1058.00	Fort Worth	80% - 100%	50% - 80%	59.53
48	23104	439	1059.01	Fort Worth	80% - 100%	50% - 80%	63.9245
48	23104	439	1059.02	Fort Worth	80% - 100%	<50%	32.2907
48	23104	439	1060.02	Fort Worth	80% - 100%	50% - 80%	55.6969
48	23104	439	1060.04	Fort Worth	80% - 100%	50% - 80%	65.4998
48	23104	439	1060.05	Fort Worth	80% - 100%	80% - 120%	83.765
48	23104	439	1060.06	Fort Worth	80% - 100%	50% - 80%	65.4127
48	23104	439	1061.01	Fort Worth	80% - 100%	50% - 80%	54.5475
48	23104	439	1061.02	Fort Worth	80% - 100%	<50%	42.1698
48	23104	439	1062.01	Fort Worth	80% - 100%	50% - 80%	56.0829
48	23104	439	1062.02	Fort Worth	80% - 100%	<50%	44.1626
48	23104	439	1063.00	Fort Worth	80% - 100%	50% - 80%	53.9425
48	23104	439	1064.00	Fort Worth	50% - <80%	50% - 80%	65.7394
48	23104	439	1065.02	Fort Worth	50% - <80%	50% - 80%	58.4265
48	23104	439	1065.03	Fort Worth	50% - <80%	50% - 80%	60.5149
48	23104	439	1065.07	Fort Worth	20% - <50%	50% - 80%	75.8484
48	23104	439	1065.09	Fort Worth	50% - <80%	>120%	139.3398
48	23104	439	1065.12	Fort Worth	50% - <80%	80% - 120%	116.4563
48	23104	439	1065.13	Fort Worth	50% - <80%	50% - 80%	66.3722
48	23104	439	1065.14	Fort Worth	50% - <80%	80% - 120%	98.4295
48	23104	439	1065.15	Fort Worth	50% - <80%	50% - 80%	63.0509
48	23104	439	1065.18	Fort Worth	50% - <80%	50% - 80%	71.7467
48	23104	439	1065.19	Fort Worth	80% - 100%	N/A	0
48	23104	439	1065.20	Fort Worth	80% - 100%	50% - 80%	52.6406
48	23104	439	1065.21	Fort Worth	50% - <80%	80% - 120%	91.2001
48	23104	439	1065.22	Fort Worth	80% - 100%	50% - 80%	62.1653
48	23104	439	1065.23	Fort Worth	80% - 100%	50% - 80%	56.262
48	23104	439	1065.24	Fort Worth	50% - <80%	80% - 120%	98.5589
48	23104	439	1065.25	Fort Worth	50% - <80%	>120%	163.5252
48	23104	439	1065.26	Fort Worth	50% - <80%	>120%	134.5678
48	23104	439	1066.00	Fort Worth	50% - <80%	<50%	47.7101
48	23104	439	1067.00	Fort Worth	20% - <50%	80% - 120%	93.1541
48	23104	439	1101.02	Northeast Tarrant	50% - <80%	50% - 80%	62.1253
48	23104	439	1101.03	Northeast Tarrant	50% - <80%	50% - 80%	62.3225
48	23104	439	1101.04	Northeast Tarrant	50% - <80%	80% - 120%	80.716
48	23104	439	1102.02	Northeast Tarrant	50% - <80%	50% - 80%	74.4316
48	23104	439	1102.04	Northeast Tarrant	50% - <80%	50% - 80%	70.8042
48	23104	439	1102.05	Northeast Tarrant	50% - <80%	80% - 120%	86.295
48	23104	439	1102.06	Northeast Tarrant	50% - <80%	50% - 80%	61.893
48	23104	439	1103.01	Northeast Tarrant	50% - <80%	50% - 80%	60.0745
48	23104	439	1103.02	Northeast Tarrant	50% - <80%	50% - 80%	50.3647
48	23104	439	1104.01	Fort Worth	20% - <50%	80% - 120%	88.7911

State	MSA	County	Census Tract	Town	Minority Tract	Tract Income Catg	Percent Median
48	23104	439	1104.02	Fort Worth	50% - <80%	50% - 80%	67.397
48	23104	439	1105.00	Fort Worth	50% - <80%	50% - 80%	75.258
48	23104	439	1106.00	Fort Worth	20% - <50%	50% - 80%	77.5653
48	23104	439	1107.03	Fort Worth	20% - <50%	50% - 80%	79.5823
48	23104	439	1107.04	Fort Worth	20% - <50%	80% - 120%	84.8467
48	23104	439	1107.05	Fort Worth	20% - <50%	80% - 120%	91.753
48	23104	439	1107.06	Fort Worth	50% - <80%	50% - 80%	56.2136
48	23104	439	1108.05	Fort Worth	20% - <50%	80% - 120%	107.2402
48	23104	439	1108.06	Fort Worth	20% - <50%	>120%	128.068
48	23104	439	1108.07	Fort Worth	20% - <50%	80% - 120%	110.7684
48	23104	439	1108.08	Fort Worth	20% - <50%	>120%	191.9563
48	23104	439	1108.09	Fort Worth	20% - <50%	>120%	134.7566
48	23104	439	1109.01	Fort Worth	20% - <50%	>120%	143.0398
48	23104	439	1109.03	Fort Worth	20% - <50%	>120%	138.0089
48	23104	439	1109.05	Fort Worth	20% - <50%	>120%	133.2006
48	23104	439	1109.06	Fort Worth	20% - <50%	80% - 120%	88.0615
48	23104	439	1109.07	Fort Worth	20% - <50%	>120%	129.0602
48	23104	439	1110.03	Fort Worth	50% - <80%	80% - 120%	88.3567
48	23104	439	1110.10	Fort Worth	20% - <50%	80% - 120%	109.2499
48	23104	439	1110.15	Fort Worth	20% - <50%	50% - 80%	77.1334
48	23104	439	1110.18	Fort Worth	20% - <50%	>120%	136.9732
48	23104	439	1110.19	Fort Worth	80% - 100%	50% - 80%	71.9355
48	23104	439	1110.20	Fort Worth	80% - 100%	50% - 80%	74.0686
48	23104	439	1110.21	Fort Worth	50% - <80%	80% - 120%	106.3812
48	23104	439	1110.22	Fort Worth	50% - <80%	80% - 120%	104.2311
48	23104	439	1110.23	Fort Worth	80% - 100%	80% - 120%	97.476
48	23104	439	1110.24	Fort Worth	50% - <80%	80% - 120%	81.5799
48	23104	439	1110.25	Fort Worth	80% - 100%	80% - 120%	106.4368
48	23104	439	1110.26	Fort Worth	80% - 100%	50% - 80%	79.1225
48	23104	439	1110.27	Fort Worth	50% - <80%	80% - 120%	88.7996
48	23104	439	1110.28	Fort Worth	50% - <80%	80% - 120%	94.4923
48	23104	439	1110.29	Fort Worth	20% - <50%	80% - 120%	107.0309
48	23104	439	1110.30	Fort Worth	20% - <50%	80% - 120%	116.1151
48	23104	439	1110.31	Fort Worth	50% - <80%	>120%	146.545
48	23104	439	1110.32	Fort Worth	50% - <80%	>120%	143.6
48	23104	439	1110.33	Fort Worth	50% - <80%	>120%	127.3324
48	23104	439	1111.02	Fort Worth	80% - 100%	50% - 80%	59.6825
48	23104	439	1111.03	Fort Worth	80% - 100%	50% - 80%	56.8669
48	23104	439	1111.04	Fort Worth	80% - 100%	50% - 80%	58.1955
48	23104	439	1112.02	Fort Worth	80% - 100%	50% - 80%	54.1289
48	23104	439	1112.03	Fort Worth	50% - <80%	80% - 120%	106.7502
48	23104	439	1112.04	Fort Worth	20% - <50%	80% - 120%	97.2994
48	23104	439	1113.04	Arlington	20% - <50%	>120%	130.7844
48	23104	439	1113.06	Arlington	50% - <80%	80% - 120%	101.4035
48	23104	439	1113.07	Arlington	50% - <80%	50% - 80%	58.2971
48	23104	439	1113.08	Arlington	20% - <50%	80% - 120%	87.9817
48	23104	439	1113.09	Arlington	50% - <80%	80% - 120%	87.8183
48	23104	439	1113.11	Arlington	20% - <50%	>120%	155.3376
48	23104	439	1113.12	Arlington	20% - <50%	>120%	181.8981
48	23104	439	1113.14	Arlington	50% - <80%	>120%	146.5982
48	23104	439	1113.15	Arlington	50% - <80%	80% - 120%	87.4094
48	23104	439	1113.16	Arlington	80% - 100%	80% - 120%	116.8048
48	23104	439	1113.17	Arlington	20% - <50%	>120%	133.1558
48	23104	439	1113.18	Arlington	20% - <50%	80% - 120%	105.0889
48	23104	439	1113.19	Arlington	50% - <80%	>120%	153.5941
48	23104	439	1113.20	Arlington	50% - <80%	>120%	154.8016
48	23104	439	1114.02	Arlington	20% - <50%	80% - 120%	108.9498

State	MSA	County	Census Tract	Town	Minority Tract	Tract Income Catg	Percent Median
48	23104	439	1114.05	Arlington	20% - <50%	50% - 80%	79.1503
48	23104	439	1114.06	Arlington	20% - <50%	>120%	149.7295
48	23104	439	1114.07	Arlington	20% - <50%	>120%	154.2317
48	23104	439	1114.08	Arlington	20% - <50%	>120%	135.6979
48	23104	439	1114.09	Arlington	20% - <50%	>120%	156.6383
48	23104	439	1114.10	Arlington	50% - <80%	50% - 80%	62.6274
48	23104	439	1114.11	Arlington	20% - <50%	>120%	123.2126
48	23104	439	1115.05	Arlington	20% - <50%	80% - 120%	109.7121
48	23104	439	1115.06	Arlington	20% - <50%	80% - 120%	80.8769
48	23104	439	1115.13	Arlington	50% - <80%	80% - 120%	94.6774
48	23104	439	1115.14	Arlington	50% - <80%	80% - 120%	82.4099
48	23104	439	1115.16	Arlington	50% - <80%	80% - 120%	92.5601
48	23104	439	1115.22	Arlington	80% - 100%	50% - 80%	77.9501
48	23104	439	1115.25	Arlington	50% - <80%	80% - 120%	90.0204
48	23104	439	1115.26	Arlington	50% - <80%	80% - 120%	85.5775
48	23104	439	1115.29	Arlington	20% - <50%	>120%	134.269
48	23104	439	1115.30	Arlington	20% - <50%	>120%	138.0536
48	23104	439	1115.31	Arlington	20% - <50%	80% - 120%	101.3321
48	23104	439	1115.32	Arlington	20% - <50%	80% - 120%	119.4255
48	23104	439	1115.33	Arlington	20% - <50%	>120%	151.5517
48	23104	439	1115.34	Arlington	20% - <50%	80% - 120%	116.9608
48	23104	439	1115.36	Arlington	80% - 100%	50% - 80%	69.126
48	23104	439	1115.38	Arlington	50% - <80%	80% - 120%	99.2256
48	23104	439	1115.40	Arlington	50% - <80%	80% - 120%	103.1373
48	23104	439	1115.41	Arlington	50% - <80%	80% - 120%	92.1971
48	23104	439	1115.42	Arlington	50% - <80%	>120%	121.4545
48	23104	439	1115.43	Arlington	50% - <80%	80% - 120%	80.278
48	23104	439	1115.44	Arlington	50% - <80%	80% - 120%	93.5849
48	23104	439	1115.45	Arlington	20% - <50%	>120%	154.1506
48	23104	439	1115.46	Arlington	20% - <50%	>120%	123.388
48	23104	439	1115.51	Arlington	50% - <80%	>120%	164.8779
48	23104	439	1115.52	Arlington	20% - <50%	80% - 120%	112.7369
48	23104	439	1115.53	Arlington	50% - <80%	50% - 80%	61.9438
48	23104	439	1115.54	Arlington	50% - <80%	>120%	129.6555
48	23104	439	1115.55	Arlington	80% - 100%	>120%	145.571
48	23104	439	1115.56	Arlington	80% - 100%	50% - 80%	69.8955
48	23104	439	1115.57	Arlington	80% - 100%	50% - 80%	65.3244
48	23104	439	1115.58	Arlington	80% - 100%	50% - 80%	70.7522
48	23104	439	1115.59	Arlington	50% - <80%	<50%	45.1995
48	23104	439	1115.60	Arlington	50% - <80%	80% - 120%	85.2835
48	23104	439	1115.61	Arlington	80% - 100%	80% - 120%	81.6307
48	23104	439	1115.62	Arlington	80% - 100%	>120%	130.2931
48	23104	439	1115.63	Arlington	80% - 100%	>120%	146.2159
48	23104	439	1115.64	Arlington	50% - <80%	80% - 120%	119.2464
48	23104	439	1115.65	Arlington	50% - <80%	>120%	162.2245
48	23104	439	1115.66	Arlington	50% - <80%	>120%	214.3534
48	23104	439	1115.67	Arlington	80% - 100%	80% - 120%	107.2692
48	23104	439	1115.68	Arlington	50% - <80%	80% - 120%	113.648
48	23104	439	1115.69	Arlington	80% - 100%	50% - 80%	52.9649
48	23104	439	1115.70	Arlington	80% - 100%	50% - 80%	64.4726
48	23104	439	1115.71	Arlington	80% - 100%	50% - 80%	68.8151
48	23104	439	1115.72	Arlington	80% - 100%	>120%	123.5138
48	23104	439	1130.03	Arlington	50% - <80%	>120%	122.506
48	23104	439	1130.04	Arlington	20% - <50%	>120%	131.7136
48	23104	439	1130.05	Arlington	80% - 100%	50% - 80%	70.2379
48	23104	439	1130.06	Arlington	80% - 100%	50% - 80%	60.0091
48	23104	439	1130.07	Arlington	80% - 100%	50% - 80%	53.3097

State	MSA	County	Census Tract	Town	Minority Tract	Tract Income Catg	Percent Median
48	23104	439	1131.02	Arlington	50% - <80%	>120%	132.7747
48	23104	439	1131.04	Arlington	50% - <80%	50% - 80%	65.9209
48	23104	439	1131.07	Arlington	20% - <50%	>120%	146.3018
48	23104	439	1131.08	Arlington	20% - <50%	>120%	169.7636
48	23104	439	1131.09	Arlington	50% - <80%	80% - 120%	92.8553
48	23104	439	1131.10	Arlington	50% - <80%	50% - 80%	69.6439
48	23104	439	1131.12	Arlington	20% - <50%	>120%	167.0679
48	23104	439	1131.15	Arlington	50% - <80%	50% - 80%	51.2891
48	23104	439	1131.16	Arlington	80% - 100%	50% - 80%	60.1701
48	23104	439	1131.17	Arlington	50% - <80%	<50%	47.277
48	23104	439	1131.18	Arlington	80% - 100%	50% - 80%	55.052
48	23104	439	1131.19	Arlington	50% - <80%	80% - 120%	81.2387
48	23104	439	1131.20	Arlington	50% - <80%	>120%	241.6689
48	23104	439	1131.21	Arlington	80% - 100%	N/A	0
48	23104	439	1131.22	Arlington	50% - <80%	80% - 120%	114.3413
48	23104	439	1132.06	Northeast Tarrant	20% - <50%	50% - 80%	65.3111
48	23104	439	1132.07	Northeast Tarrant	20% - <50%	>120%	133.8866
48	23104	439	1132.10	Northeast Tarrant	20% - <50%	>120%	144.8753
48	23104	439	1132.12	Northeast Tarrant	20% - <50%	>120%	141.5794
48	23104	439	1132.13	Northeast Tarrant	20% - <50%	50% - 80%	74.1956
48	23104	439	1132.14	Northeast Tarrant	20% - <50%	80% - 120%	90.0833
48	23104	439	1132.15	Northeast Tarrant	20% - <50%	80% - 120%	92.4487
48	23104	439	1132.16	Northeast Tarrant	20% - <50%	80% - 120%	109.4556
48	23104	439	1132.17	Northeast Tarrant	20% - <50%	80% - 120%	98.8118
48	23104	439	1132.18	Northeast Tarrant	20% - <50%	>120%	138.7252
48	23104	439	1132.21	Northeast Tarrant	20% - <50%	80% - 120%	111.2124
48	23104	439	1132.22	Northeast Tarrant	50% - <80%	50% - 80%	71.7189
48	23104	439	1132.23	Northeast Tarrant	20% - <50%	50% - 80%	74.1388
48	23104	439	1133.01	Northeast Tarrant	20% - <50%	80% - 120%	106.121
48	23104	439	1133.02	Northeast Tarrant	20% - <50%	50% - 80%	62.1386
48	23104	439	1134.03	Northeast Tarrant	20% - <50%	80% - 120%	97.7918
48	23104	439	1134.04	Northeast Tarrant	20% - <50%	50% - 80%	68.7957
48	23104	439	1134.07	Northeast Tarrant	50% - <80%	50% - 80%	66.8707
48	23104	439	1134.08	Northeast Tarrant	20% - <50%	80% - 120%	86.2672
48	23104	439	1134.09	Northeast Tarrant	20% - <50%	80% - 120%	118.5083
48	23104	439	1134.10	Northeast Tarrant	50% - <80%	50% - 80%	63.991
48	23104	439	1135.09	Northeast Tarrant	50% - <80%	50% - 80%	70.7655
48	23104	439	1135.10	Northeast Tarrant	50% - <80%	80% - 120%	87.5993
48	23104	439	1135.11	Northeast Tarrant	50% - <80%	80% - 120%	85.3004
48	23104	439	1135.12	Northeast Tarrant	20% - <50%	80% - 120%	85.8969
48	23104	439	1135.13	Northeast Tarrant	50% - <80%	80% - 120%	102.8965
48	23104	439	1135.14	Northeast Tarrant	50% - <80%	50% - 80%	78.9071
48	23104	439	1135.16	Northeast Tarrant	20% - <50%	80% - 120%	100.3242
48	23104	439	1135.17	Northeast Tarrant	50% - <80%	80% - 120%	83.7227
48	23104	439	1135.19	Northeast Tarrant	20% - <50%	80% - 120%	116.3026
48	23104	439	1135.20	Northeast Tarrant	50% - <80%	>120%	139.8431
48	23104	439	1135.21	Northeast Tarrant	50% - <80%	50% - 80%	67.5398
48	23104	439	1135.22	Northeast Tarrant	50% - <80%	50% - 80%	72.3444
48	23104	439	1136.07	Northeast Tarrant	50% - <80%	80% - 120%	97.3381
48	23104	439	1136.11	Northeast Tarrant	20% - <50%	>120%	132.7263
48	23104	439	1136.12	Northeast Tarrant	20% - <50%	>120%	139.8988
48	23104	439	1136.13	Northeast Tarrant	20% - <50%	>120%	139.8153
48	23104	439	1136.18	Northeast Tarrant	20% - <50%	80% - 120%	117.717
48	23104	439	1136.19	Northeast Tarrant	50% - <80%	50% - 80%	66.9203
48	23104	439	1136.22	Northeast Tarrant	20% - <50%	>120%	192.456
48	23104	439	1136.23	Northeast Tarrant	20% - <50%	>120%	136.8413
48	23104	439	1136.24	Northeast Tarrant	20% - <50%	>120%	144.0235

State	MSA	County	Census Tract	Town	Minority Tract	Tract Income Catg	Percent Median
48	23104	439	1136.25	Northeast Tarrant	20% - <50%	>120%	155.1972
48	23104	439	1136.26	Northeast Tarrant	20% - <50%	>120%	136.6114
48	23104	439	1136.28	Northeast Tarrant	50% - <80%	80% - 120%	88.7572
48	23104	439	1136.29	Northeast Tarrant	20% - <50%	>120%	139.6859
48	23104	439	1136.30	Northeast Tarrant	20% - <50%	50% - 80%	78.1025
48	23104	439	1136.32	Northeast Tarrant	20% - <50%	>120%	215.158
48	23104	439	1136.33	Northeast Tarrant	20% - <50%	>120%	195.4627
48	23104	439	1136.34	Northeast Tarrant	20% - <50%	>120%	234.425
48	23104	439	1136.35	Northeast Tarrant	50% - <80%	80% - 120%	95.9055
48	23104	439	1136.36	Northeast Tarrant	20% - <50%	50% - 80%	61.0848
48	23104	439	1136.37	Northeast Tarrant	20% - <50%	80% - 120%	85.7312
48	23104	439	1136.38	Northeast Tarrant	20% - <50%	80% - 120%	82.7293
48	23104	439	1136.39	Northeast Tarrant	20% - <50%	>120%	211.0515
48	23104	439	1136.40	Northeast Tarrant	20% - <50%	>120%	249.715
48	23104	439	1137.07	Northeast Tarrant	20% - <50%	>120%	196.2903
48	23104	439	1137.09	Northeast Tarrant	20% - <50%	>120%	189.0524
48	23104	439	1137.10	Northeast Tarrant	20% - <50%	80% - 120%	105.2208
48	23104	439	1137.11	Northeast Tarrant	20% - <50%	>120%	136.9018
48	23104	439	1137.12	Northeast Tarrant	20% - <50%	>120%	122.6003
48	23104	439	1137.13	Northeast Tarrant	50% - <80%	50% - 80%	77.0051
48	23104	439	1137.14	Northeast Tarrant	20% - <50%	>120%	147.1814
48	23104	439	1137.15	Northeast Tarrant	20% - <50%	>120%	135.877
48	23104	439	1137.16	Northeast Tarrant	20% - <50%	>120%	142.1251
48	23104	439	1138.03	Northeast Tarrant	20% - <50%	80% - 120%	99.0635
48	23104	439	1138.08	Northeast Tarrant	20% - <50%	80% - 120%	94.9049
48	23104	439	1138.09	Northeast Tarrant	20% - <50%	80% - 120%	89.6526
48	23104	439	1138.10	Northeast Tarrant	20% - <50%	80% - 120%	84.2248
48	23104	439	1138.11	Northeast Tarrant	50% - <80%	80% - 120%	103.0611
48	23104	439	1138.12	Northeast Tarrant	20% - <50%	>120%	176.8805
48	23104	439	1138.13	Northeast Tarrant	20% - <50%	>120%	191.8026
48	23104	439	1138.14	Northeast Tarrant	20% - <50%	>120%	187.0972
48	23104	439	1138.15	Northeast Tarrant	10% - <20%	>120%	246.4615
48	23104	439	1138.16	Northeast Tarrant	20% - <50%	>120%	209.89
48	23104	439	1139.06	Northeast Tarrant	20% - <50%	>120%	256.4168
48	23104	439	1139.08	Northeast Tarrant	20% - <50%	>120%	296.2455
48	23104	439	1139.12	Northeast Tarrant	20% - <50%	>120%	218.6523
48	23104	439	1139.16	Northeast Tarrant	50% - <80%	80% - 120%	85.7033
48	23104	439	1139.17	Northeast Tarrant	50% - <80%	80% - 120%	107.3201
48	23104	439	1139.18	Northeast Tarrant	50% - <80%	50% - 80%	78.6264
48	23104	439	1139.19	Northeast Tarrant	20% - <50%	>120%	146.5123
48	23104	439	1139.20	Northeast Tarrant	20% - <50%	>120%	132.3839
48	23104	439	1139.23	Northeast Tarrant	50% - <80%	80% - 120%	103.147
48	23104	439	1139.24	Northeast Tarrant	50% - <80%	80% - 120%	110.4405
48	23104	439	1139.25	Northeast Tarrant	20% - <50%	80% - 120%	100.3702
48	23104	439	1139.30	Northeast Tarrant	50% - <80%	80% - 120%	107.2003
48	23104	439	1139.31	Northeast Tarrant	50% - <80%	>120%	129.964
48	23104	439	1139.32	Northeast Tarrant	50% - <80%	>120%	173.8653
48	23104	439	1139.33	Northeast Tarrant	20% - <50%	>120%	136.2315
48	23104	439	1139.34	Northeast Tarrant	20% - <50%	N/A	0
48	23104	439	1139.35	Northeast Tarrant	20% - <50%	>120%	143.9593
48	23104	439	1139.36	Northeast Tarrant	20% - <50%	>120%	164.3528
48	23104	439	1139.37	Northeast Tarrant	20% - <50%	N/A	0
48	23104	439	1139.38	Northeast Tarrant	50% - <80%	>120%	137.2841
48	23104	439	1139.39	Northeast Tarrant	50% - <80%	>120%	141.5758
48	23104	439	1139.40	Northeast Tarrant	20% - <50%	>120%	156.2329
48	23104	439	1139.41	Northeast Tarrant	20% - <50%	80% - 120%	99.2716
48	23104	439	1139.42	Northeast Tarrant	20% - <50%	80% - 120%	116.7418

State	MSA	County	Census Tract	Town	Minority Tract	Tract Income Catg	Percent Median
48	23104	439	1139.43	Northeast Tarrant	20% - <50%	>120%	122.7782
48	23104	439	1139.44	Northeast Tarrant	20% - <50%	>120%	142.263
48	23104	439	1139.45	Northeast Tarrant	20% - <50%	>120%	171.627
48	23104	439	1139.46	Northeast Tarrant	20% - <50%	>120%	153.7973
48	23104	439	1139.47	Northeast Tarrant	20% - <50%	80% - 120%	107.6625
48	23104	439	1139.48	Northeast Tarrant	50% - <80%	80% - 120%	111.3758
48	23104	439	1139.49	Northeast Tarrant	20% - <50%	>120%	196.5311
48	23104	439	1139.50	Northeast Tarrant	20% - <50%	>120%	173.2132
48	23104	439	1139.51	Northeast Tarrant	20% - <50%	80% - 120%	105.5003
48	23104	439	1139.52	Northeast Tarrant	20% - <50%	80% - 120%	106.7054
48	23104	439	1139.53	Northeast Tarrant	20% - <50%	>120%	272.9022
48	23104	439	1139.54	Northeast Tarrant	10% - <20%	>120%	217.1472
48	23104	439	1139.55	Northeast Tarrant	20% - <50%	>120%	222.7383
48	23104	439	1139.56	Northeast Tarrant	20% - <50%	>120%	297.9806
48	23104	439	1139.57	Northeast Tarrant	20% - <50%	>120%	302.4852
48	23104	439	1139.58	Northeast Tarrant	20% - <50%	>120%	284.8395
48	23104	439	1140.03	Fort Worth	50% - <80%	80% - 120%	105.9516
48	23104	439	1140.06	Fort Worth	20% - <50%	80% - 120%	119.3468
48	23104	439	1140.09	Fort Worth	50% - <80%	80% - 120%	118.2506
48	23104	439	1140.10	Fort Worth	50% - <80%	>120%	151.9982
48	23104	439	1140.11	Fort Worth	50% - <80%	>120%	132.2399
48	23104	439	1140.12	Fort Worth	50% - <80%	>120%	130.0971
48	23104	439	1140.13	Fort Worth	50% - <80%	50% - 80%	77.7383
48	23104	439	1140.14	Fort Worth	20% - <50%	80% - 120%	87.2061
48	23104	439	1140.15	Fort Worth	20% - <50%	80% - 120%	118.6245
48	23104	439	1141.05	Fort Worth	20% - <50%	>120%	206.7284
48	23104	439	1141.06	Fort Worth	20% - <50%	80% - 120%	117.1919
48	23104	439	1141.07	Fort Worth	20% - <50%	>120%	128.788
48	23104	439	1141.08	Fort Worth	10% - <20%	>120%	158.2559
48	23104	439	1141.09	Fort Worth	20% - <50%	>120%	129.8721
48	23104	439	1141.10	Fort Worth	20% - <50%	>120%	151.7296
48	23104	439	1141.11	Fort Worth	20% - <50%	>120%	216.5821
48	23104	439	1141.12	Fort Worth	20% - <50%	>120%	163.1659
48	23104	439	1141.13	Fort Worth	20% - <50%	80% - 120%	101.5003
48	23104	439	1142.03	Fort Worth	20% - <50%	50% - 80%	79.137
48	23104	439	1142.04	Fort Worth	10% - <20%	80% - 120%	100.6836
48	23104	439	1142.05	Fort Worth	10% - <20%	80% - 120%	95.7688
48	23104	439	1142.06	Fort Worth	20% - <50%	80% - 120%	111.8791
48	23104	439	1142.07	Fort Worth	20% - <50%	>120%	138.8909
48	23104	439	1216.05	Arlington	20% - <50%	>120%	121.3045
48	23104	439	1216.06	Arlington	20% - <50%	>120%	134.0113
48	23104	439	1216.08	Arlington	20% - <50%	80% - 120%	103.2365
48	23104	439	1216.09	Arlington	20% - <50%	>120%	167.5604
48	23104	439	1216.10	Arlington	20% - <50%	80% - 120%	115.0443
48	23104	439	1216.11	Arlington	20% - <50%	80% - 120%	101.8233
48	23104	439	1216.12	Arlington	20% - <50%	80% - 120%	108.8942
48	23104	439	1216.13	Arlington	50% - <80%	80% - 120%	85.3791
48	23104	439	1216.14	Arlington	80% - 100%	<50%	49.3641
48	23104	439	1216.15	Arlington	50% - <80%	>120%	140.4892
48	23104	439	1217.02	Arlington	50% - <80%	80% - 120%	84.612
48	23104	439	1217.03	Arlington	80% - 100%	<50%	43.2031
48	23104	439	1217.04	Arlington	80% - 100%	<50%	45.4064
48	23104	439	1219.04	Arlington	80% - 100%	50% - 80%	58.4665
48	23104	439	1219.05	Arlington	80% - 100%	<50%	29.9943
48	23104	439	1219.06	Arlington	80% - 100%	50% - 80%	51.0266
48	23104	439	1219.07	Arlington	80% - 100%	<50%	43.4899
48	23104	439	1219.08	Arlington	80% - 100%	<50%	41.675

State	MSA	County	Census Tract	Town	Minority Tract	Tract Income Catg	Percent Median
48	23104	439	1220.01	Arlington	80% - 100%	50% - 80%	65.9415
48	23104	439	1220.02	Arlington	80% - 100%	50% - 80%	52.2571
48	23104	439	1221.00	Arlington	80% - 100%	50% - 80%	65.1453
48	23104	439	1222.00	Arlington	50% - <80%	<50%	43.6085
48	23104	439	1223.00	Arlington	50% - <80%	50% - 80%	56.4374
48	23104	439	1224.01	Arlington	50% - <80%	<50%	28.3742
48	23104	439	1224.02	Arlington	50% - <80%	80% - 120%	104.9619
48	23104	439	1225.00	Arlington	20% - <50%	80% - 120%	80.8455
48	23104	439	1226.00	Arlington	20% - <50%	80% - 120%	90.2091
48	23104	439	1227.01	Arlington	50% - <80%	80% - 120%	96.5928
48	23104	439	1227.02	Arlington	20% - <50%	80% - 120%	85.465
48	23104	439	1228.01	Arlington	80% - 100%	<50%	42.038
48	23104	439	1228.02	Arlington	50% - <80%	<50%	49.3653
48	23104	439	1229.01	Arlington	80% - 100%	50% - 80%	65.1853
48	23104	439	1229.02	Arlington	80% - 100%	50% - 80%	76.7897
48	23104	439	1230.01	Fort Worth	20% - <50%	80% - 120%	80.5768
48	23104	439	1230.02	Fort Worth	20% - <50%	>120%	159.3086
48	23104	439	1231.00	Fort Worth	80% - 100%	<50%	49.3762
48	23104	439	1232.00	Fort Worth	50% - <80%	<50%	47.9376
48	23104	439	1233.01	Fort Worth	20% - <50%	>120%	149.3097
48	23104	439	1233.02	Fort Worth	50% - <80%	>120%	190.0446
48	23104	439	1235.00	Fort Worth	80% - 100%	<50%	49.5021
48	23104	439	1236.00	Fort Worth	50% - <80%	<50%	41.4657
48	23104	439	1237.00	Fort Worth	20% - <50%	>120%	137.6519
48	23104	439	9800.00	Northeast Tarrant	80% - 100%	N/A	0